



MARCH PUMPS

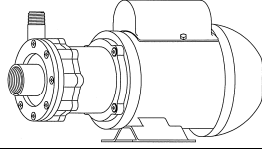
1819 PICKWICK AVE., GLENVIEW, IL 60026-1306, U.S.A
 PHONE: (847) 729-5300 - FAX: (847) 729-7062
 WWW.MARCHPUMP.COM

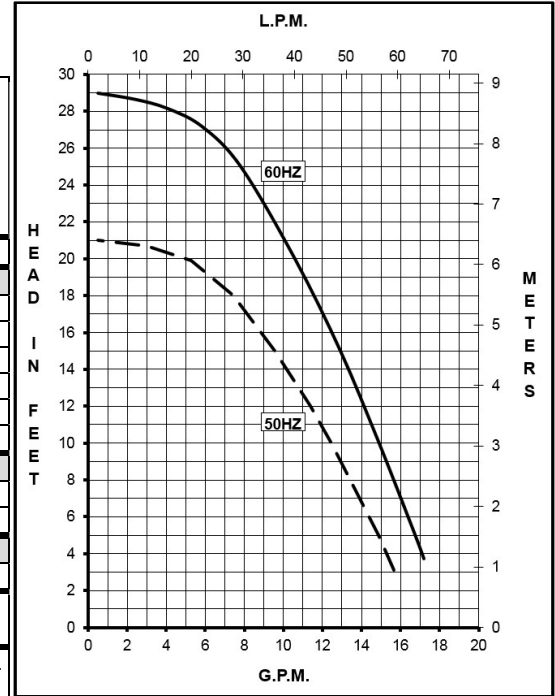
TE-5S-MD WITH WEG MOTOR

DESCRIPTION: Series 5 are centrifugal magnetic drive pumps, eliminating the need for a shaft seal. All are serviceable with a screwdriver.

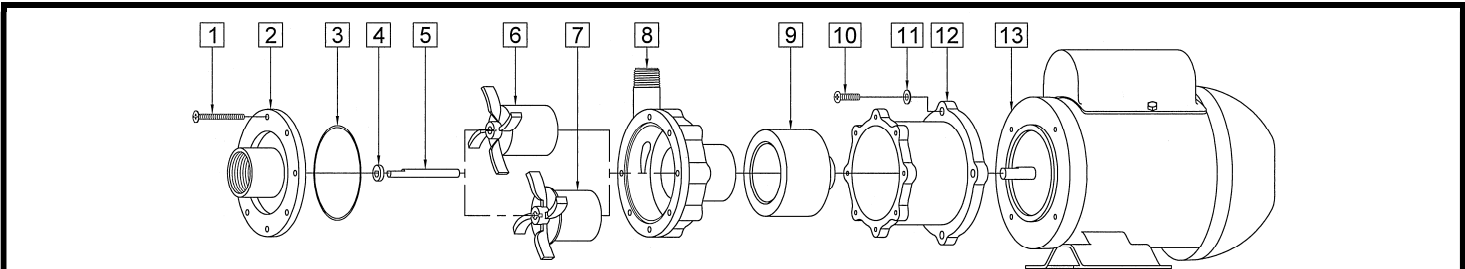
OPERATION: Pumps are not self-priming, lack a suction lift, and thus require a **flooded suction**. Pumps **cannot be run dry** because the impeller requires the liquid being pumped for lubrication. For liquids with a specific gravity greater than water, have a higher viscosity, or for elevated temperatures, a trimmed impeller may be necessary. For application assistance, contact March Pump.

ELECTRICAL: Models are dual voltage 115 Volt / 230 Volt and have a conduit box. Models have a U.L. listed motor, which is rated for continuous duty.

| | | | | | | | | | | |
|------------------------|---|----------|-----------|----------------|------------|-------------------------|-----------------|-----------|-----------|------------|
| MODEL |  | | | | | | | | | |
| | Product # 0150-0214-0300 | | | | | | | | | |
| UNITS | 60 Hz | | | | | 50 Hz | | | | |
| Max Flow | 18 gpm / 68.1 lpm | | | | | 15.98 gpm / 60.5 lpm | | | | |
| Max Head | 29 ft / 12.5 psi / 8.8 m | | | | | 20.8 ft / 9 psi / 6.3 m | | | | |
| Inlet - Outlet | 1" FPT - 1/2" MPT | | | | | 1" FPT - 1/2" MPT | | | | |
| Max Internal Pressure | 200 psi (1378 kPa) | | | | | 200 psi (1378 kPa) | | | | |
| Max Liquid Temperature | 250 °F (121 °C) | | | | | 250 °F (121 °C) | | | | |
| Packed Weight | 21.95 lbs / 9.95 kg | | | | | 21.95 lbs / 9.95 kg | | | | |
| ELECTRICAL | V | A | Hp | kW | Rpm | V | A | Hp | kW | Rpm |
| | 115 | 2.6 | 0.2 | 0.149 | 3450 | 110 | 2.4 | 0.16 | 0.119 | 2850 |
| | 230 | 1.3 | 0.2 | 0.149 | 3450 | 220 | 1.2 | 0.16 | 0.119 | 2850 |
| OVERALL SIZE | Height | | | Width | | | Length | | | |
| | 6.89 (17.5 cm) | | | 7.26 (18.4 cm) | | | 12.61 (32.0 cm) | | | |
| | Materials in Contact w/Solution: 316 Stainless Steel, Viton, Ceramic, Carbon | | | | | | | | | |



All specifications/values are based on pumping water and are intended as a guideline only. Values may vary with different motors.



When attaching the Drive Magnet to motor shaft, position the face of the Drive Magnet 3/32 inch below the face of the Motor Bracket.

| # | DESCRIPTION | MATERIAL | SIZE (Inches) | QTY. | PART # |
|----|--|---------------|---------------------|------|----------------|
| 1 | Screw | Stainless | #8-32 x 1-3/4 Lg. | 7 | 0150-0021-1000 |
| 2 | Cover | 316 Stainless | 1 FPT Inlet | 1 | 0150-0111-0010 |
| 3 | "O" Ring | Viton | 0.078 CS x 2.834 ID | 1 | 0750-0986-1000 |
| | "O" Ring (Option) | Viton/Teflon | 0.078 CS x 2.893 ID | 1 | 0150-0212-1000 |
| | "O" Ring (Option) | Buna N | 0.078 CS x 2.834 ID | 1 | 0750-0987-1000 |
| 4 | Thrust Washer | Ceramic | | 1 | 0130-0028-1000 |
| 5 | Shaft | Ceramic | | 1 | 0130-0024-1000 |
| 6 | Impeller w/Carbon Bushing | 316 Stainless | | 1 | 0150-0114-0400 |
| | Impeller w/Mica Teflon Bushing (Option) | 316 Stainless | | 1 | 0150-0114-0600 |
| | Impeller (Option) | Polypropylene | | 1 | 0150-0098-0200 |
| | Impeller w/Carbon Bushing (Option) | Polypropylene | | 1 | 0150-0098-0300 |
| | Impeller w/ Mica Teflon Bushing (Option) | Polypropylene | | 1 | 0150-0098-0500 |
| | Impeller (Option) | Kynar | | 1 | 0150-0125-0200 |
| | Impeller w/Carbon Bushing (Option) | Kynar | | 1 | 0150-0125-0300 |
| 7 | Impeller w/Mica Teflon Bushing (Option) | Kynar | | 1 | 0150-0125-0500 |
| | | | | | |
| 8 | Rear Housing | 316 Stainless | 1/2 MPT Outlet | 1 | 0150-0110-0010 |
| 9 | Drive Magnet | | | 1 | 0150-0176-0300 |
| 10 | Screw | Stainless | #10-32 x 3/4 Lg. | 4 | 0150-0050-1000 |
| 11 | Washer | Stainless | #10 | 4 | 0150-0051-1000 |
| 12 | Motor Bracket | Plastic | | 1 | 0150-0070-0100 |
| 13 | Motor (WEG) TEFC, 115/230 V, 50/60 Hz | | | 1 | 0150-0213-1000 |

LIMITED WARRANTY: March pumps are guaranteed only against defects in workmanship or materials for a period of one year from date of manufacture pumping water. For the complete warranty and to register online go to www.marchpump.com/warranty-registration

Explosion proof & special voltage motors are available for upon special order.

NOTE: Contact Factory for other materials and/or parts not listed.

0150-0060-1500