



# MARCH PUMPS

1819 PICKWICK AVE., GLENVIEW, IL 60026-1306, U.S.A  
PHONE: (847) 729-5300 - FAX: (847) 729-7062  
WWW.MARCHPUMP.COM

## DESCRIPTION:

Series 5.5 are centrifugal magnetic drive pumps, eliminating the need for a shaft seal. Pumps can be serviced with a screwdriver. Screws should be tightened in sequence and uniformly. Do not over tighten the screws or you may crush the plastic housing bosses. See the parts list for a breakdown of parts.

**Model Abbreviations:** C: Polypropylene, K: Kynar

## OPERATION:

Pumps are not self-priming, lack a suction lift, and thus require a **flooded suction**. Pumps **cannot be run dry** because the impeller requires the liquid being pumped for lubrication. The direction of motor rotation should be clockwise when facing the inlet of the pump. For liquids with a specific gravity greater than water, have a higher viscosity, or for elevated temperatures, a trimmed impeller may be necessary. For application assistance, contact March Pump.

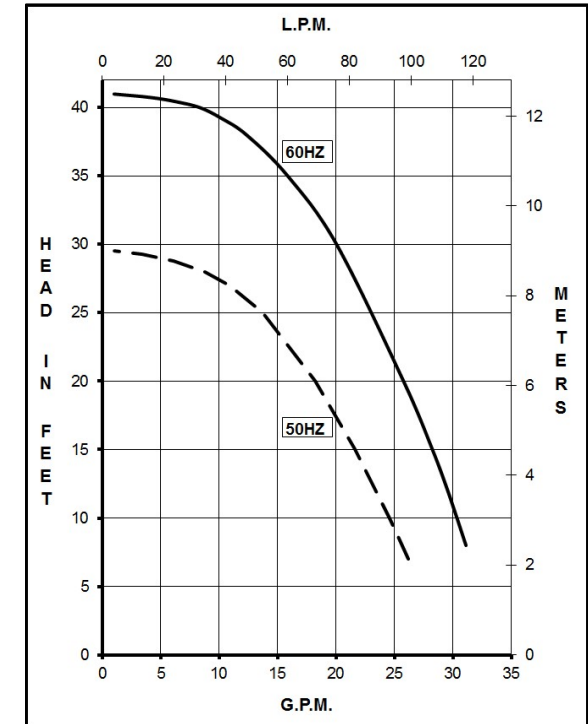
## ELECTRICAL:

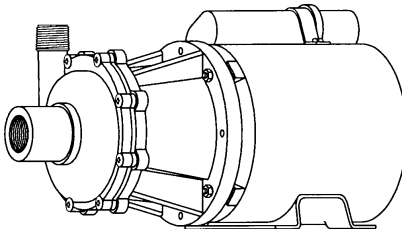
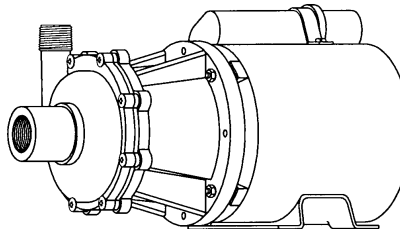
Pumps are 115/230V, 1 phase, air-cooled. Motors are Air Cooled and are U.L. listed as well as rated for continuous operation. Motors have a junction box for electrical connections. Explosion proof and special voltage motors are available upon special order.

## LIMITED WARRANTY:

March pumps are guaranteed only against defects in workmanship or materials for a period of one year from date of manufacture pumping water. For the complete warranty and to register online go to [www.marchpump.com/warranty-registration](http://www.marchpump.com/warranty-registration)

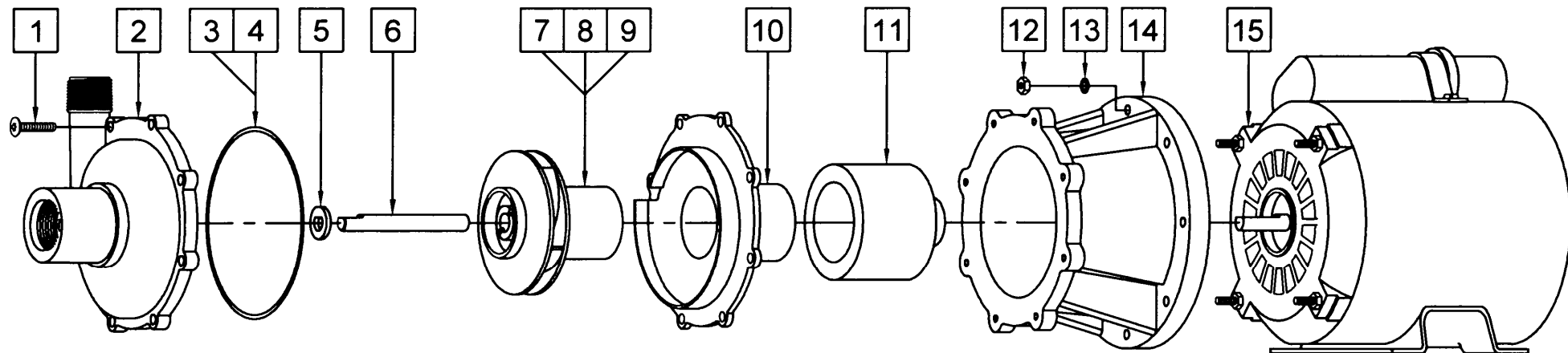
## TE-5.5C-MD-AC, TE-5.5K-MD-AC



SPECIFICATIONS	TE-5.5C-MD-AC																TE-5.5K-MD-AC																															
																																																
	Product #																0151-0027-0200																0151-0027-0400															
	Inlet - Outlet																1" FPT - 3/4" MPT																1" FPT - 3/4" MPT															
	Max Internal Pressure																50 psi (344 kPa)																75 psi (517 kPa)															
Max Liquid Temperature																190 °F (87 °C)																200 °F (93 °C)																
MODEL	60 Hz												50 Hz												Height		Width		Length		Packed Weight																	
	Max Flow		Max Head		ELECTRICAL								Max Flow		Max Head		ELECTRICAL																															
	gpm	lpm	ft	psi	m	Ph	V	A	Hp	kW	Rpm	gpm	lpm	ft	psi	m	Ph	V	A	Hp	kW	Rpm	Inches	cm	Inches	cm	Inches	cm	lbs	kg																		
TE-5.5C-MD-AC	30	114	41	17.8	12.5	1	115	2.7	1/5	0.149	3450	27	102	29.5	12.8	9	1	115	2.9	1/5	0.149	2850	6.95	17.6	5.81	14.7	12.89	32.7	17.50	7.93																		
							230	1.4																								230	1.4															
TE-5.5K-MD-AC	30	114	41	17.8	12.5	1	115	2.7	1/5	0.149	3450	27	102	29.5	12.8	9	1	115	2.9	1/5	0.149	2850	6.95	17.6	5.81	14.7	12.89	32.7	18.00	8.16																		
							230	1.4																								230	1.4															
All specifications & data are based on pumping water & are intended as a guideline only. Specifications may vary with different motors.																																																

All specifications & data are based on pumping water & are intended as a guideline only. Specifications may vary with different motors.

# PARTS LIST



**NOTE:** When attaching the Drive Magnet to the motor shaft, position the face of the Drive Magnet flush with the face of the Motor Bracket.

#	DESCRIPTION	TE-5.5C-MD-AC	TE-5.5K-MD-AC	SIZE (Inches)	QTY.	TE-5.5C-MD-AC	TE-5.5K-MD-AC
1	Screw	Stainless		#10-32 x 1 Lg.	8	0135-0180-1000	
2	Front Housing	Polypropylene	Kynar		1	0151-0027-1000	0151-0044-1000
3	"O" Ring	Viton		3/32 CS x 4-7/16 OD	1	0153-0015-1000	
4	"O" Ring (Option)	Teflon		3/32 CS x 4-7/16 OD	1	0153-0107-1000	
5	Thrust Washer	Ceramic			1	0155-0009-1000	
6	Shaft	Ceramic			1	0153-0007-1000	
7	Impeller	Polypropylene	Kynar		1	0151-0029-0500	0151-0046-0300
8	Impeller w/Carbon Bushing (Option)	Polypropylene	Kynar		1	0151-0029-0800	0151-0046-0500
9	Impeller w/Mica Teflon Bushing (Option)	Polypropylene	Kynar		1	0151-0029-1300	0151-0046-1100
10	Rear Housing w/Ceramic Thrust Washer	Polypropylene	Kynar		1	0151-0028-0100	0151-0045-0100
11	Drive Magnet				1	0151-0061-0200	
12	Hex Nut	Brass		#8-32	4	0410-0039-1000	
13	Lock Washer	Stainless		#8	4	0620-0010-1000	
14	Motor Bracket	Plastic			1	0151-0041-0100	
15	Motor, Air Cooled, 115/230 V, 1 Phase, 50/60 Hz				1	0175-0087-1000	
W	Wet End Kit	1, 2, 3, 5, 6, 7, 10	1, 2, 3, 5, 6, 7, 10		1	0151-0069-0100	0151-0070-0100

## Materials in Contact with Solution:

**TE-5.5C-MD-AC:** Polypropylene, Viton, Ceramic

**TE-5.5K-MD-AC:** Kynar/Glass Filled, Viton, Ceramic

**NOTE:** Contact Factory for other materials and/or parts not listed.

0151-0026-1100 R7