



# MARCH PUMPS

1819 PICKWICK AVE., GLENVIEW, IL 60026-1306, U.S.A  
 PHONE: (847) 729-5300 - FAX: (847) 729-7062  
 WWW.MARCHPUMP.COM

## DESCRIPTION:

Series MDXT are centrifugal magnetic drive pumps, eliminating the need for a shaft seal. Pumps are serviceable with a screwdriver.

## OPERATION:

Pumps are not self-priming, lack a suction lift, and thus require a **flooded suction**. Pumps **cannot be run dry** because the impeller requires the liquid being pumped for lubrication. For application assistance, contact March Pump.

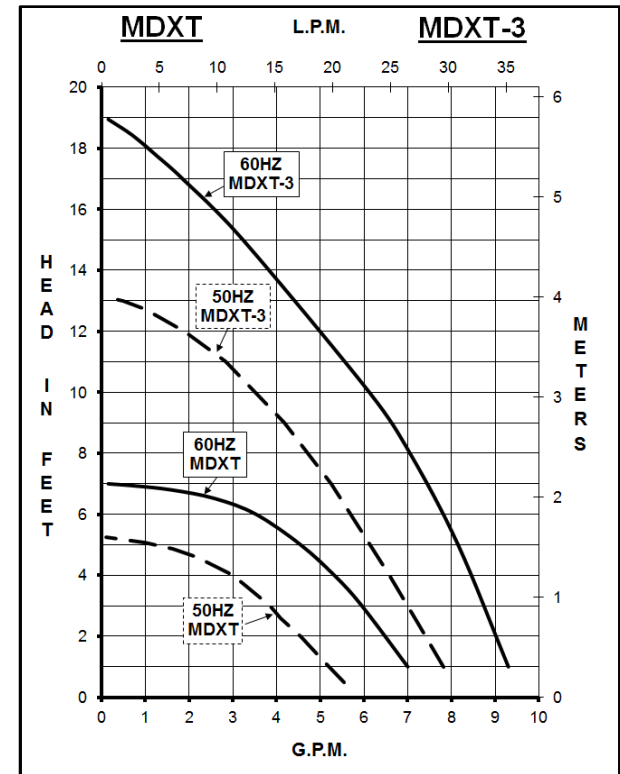
## ELECTRICAL:

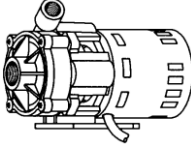
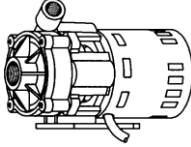
All models have air cooled motors that are U.L. listed and are rated for continuous duty. Motors have a 3 foot (0.9 m) cord. Air cooled motors are separate voltage 115 Volt 60 Hz, 115 Volt 50/60 Hz, or 230 Volt 50/60 Hz. Motors are not dual voltage.

## LIMITED WARRANTY:

March pumps are guaranteed only against defects in workmanship or materials for a period of one year from date of manufacture pumping water. For the complete warranty and to register online go to [www.marchpump.com/warranty-registration](http://www.marchpump.com/warranty-registration)

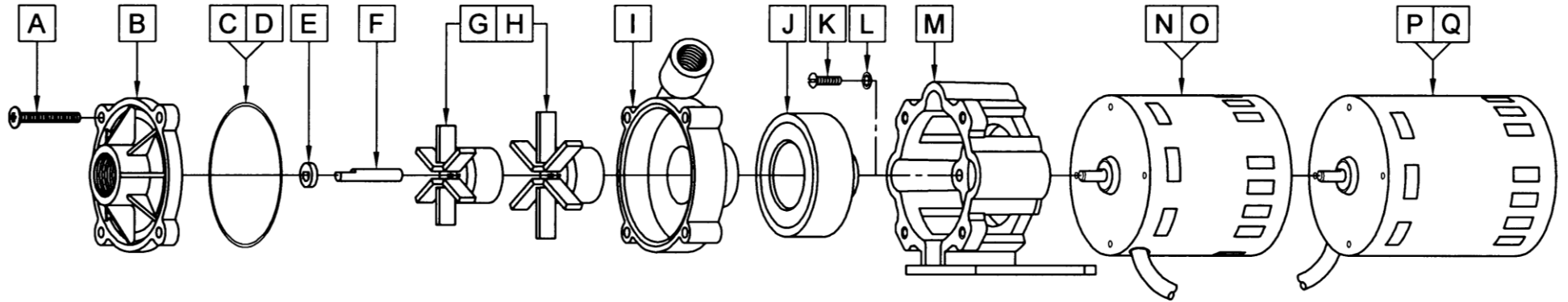
# MDXT, MDXT-3



SPECIFICATIONS	MDXT															MDXT-3															
																															
Product #	115 V					0135-0174-0100					0135-0174-0300					0135-0174-0300															
	230 V					0135-0174-0200					0135-0174-0400					0135-0174-0400															
Inlet - Outlet	1/2" FPT - 3/8" FPT															1/2" FPT - 3/8" FPT															
Max Internal Pressure	50 psi (344 kPa)															50 psi (344 kPa)															
Max Liquid Temperature	190 °F (87 °C)															190 °F (87 °C)															
MODEL	Max Flow		Max Head			60 Hz ELECTRICAL					50 Hz ELECTRICAL					Height		Width		Length		Packed Weight									
	gpm	lpm	ft	psi	m	Ph	V	A	Hp	kW	Rpm	gpm	lpm	ft	psi	m	Ph	V	A	Hp	kW	Rpm	Inches	cm	Inches	cm	Inches	cm	lbs	kg	
MDXT	7	26.5	7	3.0	2.1	1	115	0.94	1/55	0.014	1750	5.8	22	5.2	2.3	1.6	1						1300	4.86	12.3	3.88	9.8	7.14	18.1	4.60	2.08
							230	0.45	1/40	0.019								230	0.5	1/40	0.019	4.86		12.3	3.88	9.8	7.39	18.7	5.20	2.35	
MDXT-3	8.5	32.2	19	8.2	5.8	1	115	1.55	1/25	0.029	3450	7.9	30	13.1	5.7	4	1	115	1.55	1/25	0.029	2850	4.86	12.3	3.88	9.8	7.75	19.6	5.25	2.38	
							230	0.7										230	0.7				4.86	12.3	3.88	9.8	8.17	20.7	5.25	2.38	

All specifications & data are based on pumping water & are intended as a guideline only. Specifications may vary with different motors.

## PARTS LIST



**NOTE:** When attaching the Drive Magnet to the motor shaft, position the face of the Drive Magnet 1/16 inch below the face of the Motor Bracket.

#	DESCRIPTION	MATERIAL	MDXT	MDXT-3	QTY.	MDXT	MDXT-3
A	Screw	Stainless Steel	#10-32 x 1-1/2 Lg.		4	0823-0008-1000	
B	Cover	Polypropylene	1/2 FPT Inlet		1	0135-0172-1000	
C	"O" Ring	Buna N	1/16 CS x 2-7/8 OD		1	0135-0039-1000	
D	"O" Ring (Option)	Viton	1/16 CS x 2-7/8 OD		1	0135-0046-1000	
E	Thrust Washer	Ceramic			1	0130-0028-1000	
F	Shaft	Ceramic			1	0809-0160-1000	
G	Impeller	Polypropylene/Ceramic Magnet	2.625 Dia.	2.062 Dia.	1	0135-0026-0100	0135-0043-0100
H	Impeller Encapsulated (Option)	Polypropylene	2.625 Dia.	2.062 Dia.	1	0135-0133-0200	0135-0130-0200
I	Rear Housing	Polypropylene	3/8 FPT Outlet		1	0135-0171-1000	
J	Drive Magnet				1	0135-0126-0100	
K	Screw	Stainless Steel	#8-32 x 5/8 Lg.		4	0618-0027-1000	
L	Lock Washer	Stainless Steel	#8		4	0620-0010-1000	
M	Motor Bracket	Plastic			1	0135-0168-0100	
N	Motor, 1750 RPM, 115 V, 60 Hz				1	0135-0109-1000	
O	Motor, 1750 RPM, 230 V, 50/60 Hz				1	0135-0112-1000	
P	Motor, 3450 RPM, 115 V, 50/60 Hz				1		0135-0036-1000
Q	Motor, 3450 RPM, 230 V, 50/60 Hz				1		0135-0037-1000

### Materials in Contact with Solution:

Polypropylene, Ceramic Magnet, Buna N, Ceramic

NOTE: Contact Factory for other materials and/or parts not listed.

0135-0178-1000 R6