



# MARCH PUMPS

1819 PICKWICK AVE., GLENVIEW, IL 60026-1306, U.S.A  
 PHONE: (847) 729-5300 - FAX: (847) 729-7062  
 WWW.MARCHPUMP.COM

## MDX-1/2, MDX-3 1/2, MDX-5/8, MDX-3 5/8

### DESCRIPTION:

Series MDX are centrifugal magnetic drive pumps, eliminating the need for a shaft seal. Pumps can be serviced with a screwdriver. See the parts list for a breakdown of parts.

### OPERATION:

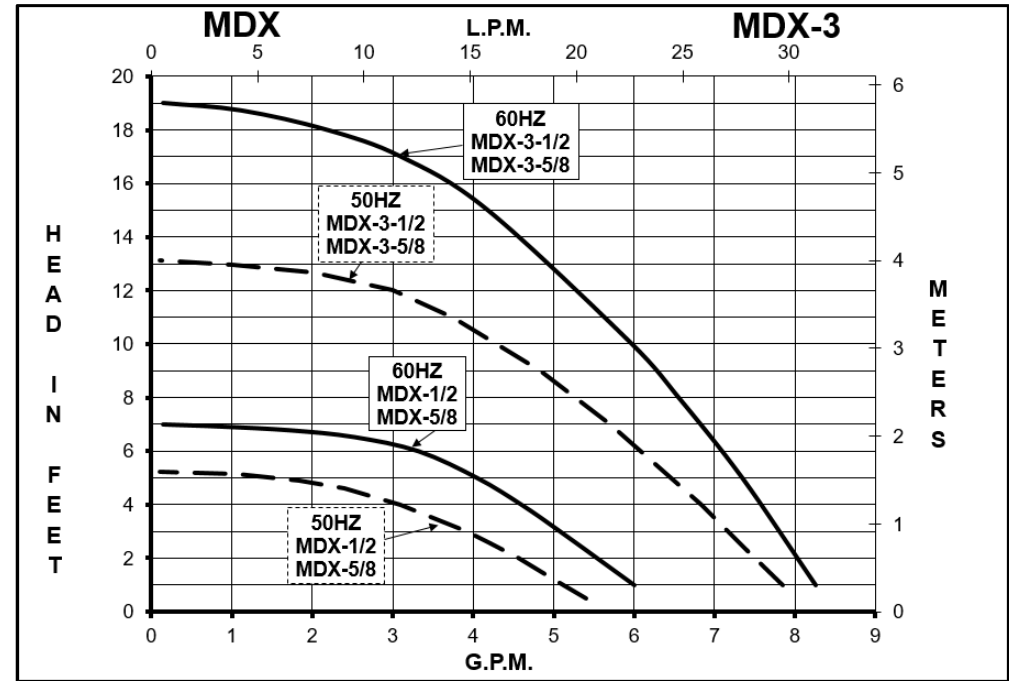
Pumps are not self-priming, lack a suction lift, and thus require a **flooded suction**. Pumps **cannot be run dry** because the impeller requires the liquid being pumped for lubrication. For application assistance, contact March Pump.

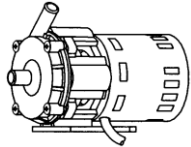
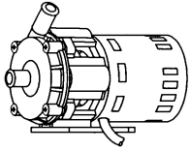
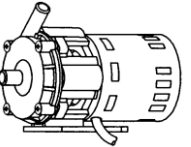
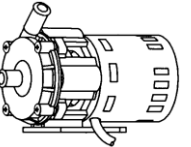
### ELECTRICAL:

All models have air cooled motors that are U.L. listed and are rated for continuous duty. Motors have a 3 foot (0.9 m) cord. Air cooled motors are separate voltage 115 Volt 60 Hz, 115 Volt 50/60 Hz, or 230 Volt 50/60 Hz. Motors are not dual voltage.

### LIMITED WARRANTY:

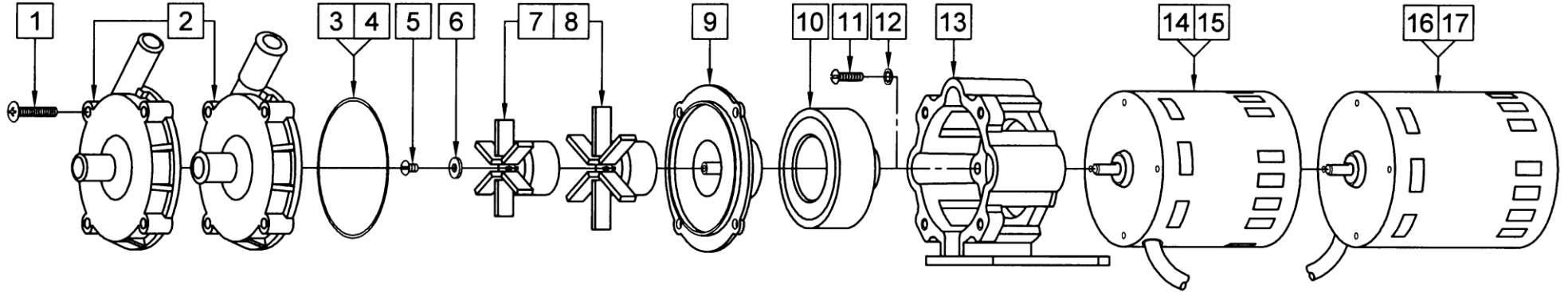
March pumps are guaranteed only against defects in workmanship or materials for a period of one year from date of manufacture pumping water. For the complete warranty and to register online go to [www.marchpump.com/warranty-registration](http://www.marchpump.com/warranty-registration)



SPECIFICATIONS		MDX-1/2		MDX-5/8		MDX-3-1/2		MDX-3-5/8																						
																														
Product #	115 V 230 V	0135-0006-0200 0135-0163-0100		0135-0006-0100 0135-0163-0200		0135-0006-0400 0135-0163-0300		0135-0006-0300 0135-0163-0400																						
Inlet - Outlet		1/2" OD - 1/2" OD		5/8" OD - 5/8" OD		1/2" OD - 1/2" OD		5/8" OD - 5/8" OD																						
Max Internal Pressure		50 psi (344 kPa)		50 psi (344 kPa)		50 psi (344 kPa)		50 psi (344 kPa)																						
Max Liquid Temperature		190 °F (87 °C)		190 °F (87 °C)		190 °F (87 °C)		190 °F (87 °C)																						
MODEL	60 Hz											50 Hz											Height		Width		Length		Packed Weight	
	Max Flow	Max Head		ELECTRICAL								Max Flow	Max Head		ELECTRICAL								Inches	cm	Inches	cm	Inches	cm	lbs	kg
	gpm	lpm	ft	psi	m	Ph	V	A	Hp	kW	Rpm	gpm	lpm	ft	psi	m	Ph	V	A	Hp	kW	Rpm								
MDX-1/2	6	22.7	7	3.03	2.13	1	115	0.94	1/55	0.014	1750	5.8	22	5.2	2.3	1.6	1	230	0.5	1/40	0.019	1300	4.94	12.5	3.88	9.8	7.09	18.0	4.50	2.04
							230	0.45	1/40	0.019								1300	4.94	12.5	3.88	9.8	7.34	18.6	5.05	2.29				
MDX-5/8	6	22.7	7	3.03	2.13	1	115	0.94	1/55	0.014	1750	5.8	22	5.2	2.3	1.6	1	230	0.5	1/40	0.019	1300	4.97	12.6	3.88	9.8	7.09	18.0	4.55	2.06
							230	0.45	1/40	0.019								1300	4.97	12.6	3.88	9.8	7.34	18.6	5.05	2.29				
MDX-3-1/2	8.5	32.2	19	8.2	5.8	1	115	1.55	1/25	0.030	3450	7.9	30	13.1	5.7	4	1	230	0.7	1/25	0.030	2850	4.94	12.5	3.88	9.8	7.69	19.5	5.20	2.35
							230	0.7	1/25	0.030	2850							4.94	12.5	3.88	9.8	8.11	20.5	5.20	2.35					
MDX-3-5/8	8.5	32.2	19	8.2	5.8	1	115	1.55	1/25	0.030	3450	7.9	30	13.1	5.7	4	1	230	0.7	1/25	0.030	2850	4.97	12.6	3.88	9.8	7.69	19.5	5.20	2.35
							230	0.7	1/25	0.030	2850							4.97	12.6	3.88	9.8	8.11	20.5	5.15	2.33					

All specifications & data are based on pumping water & are intended as a guideline only. Specifications may vary with different motors.

**PARTS LIST**



**NOTE:** When attaching the Drive Magnet to the motor shaft, position the face of the Drive Magnet 1/16 inch below the face of the Motor Bracket.

#	DESCRIPTION	MATERIAL	SIZE (Inches)	QTY.	MDX-1/2	MDX-5/8	MDX-3-1/2	MDX-3-5/8
1	Screw	Stainless Steel	#10-32 x 1 Lg.	4	0135-0180-1000			
2	Front Housing	Polypropylene	1/2 OD Inlet & Outlet	1	0135-0118-1000		0135-0118-1000	
			5/8 OD Inlet & Outlet	1		0135-0117-1000		0135-0117-1000
3	"O" Ring	Buna N	1/16 CS x 3 OD	1	0135-0007-1000			
4	"O" Ring (Option)	Viton	1/16 CS x 3 OD	1	0135-0023-1000			
5	Screw	Stainless Steel	#8-32 x 1/4 Lg.	1	0135-0042-1000			
6	Thrust Washer	Ryton/Teflon/Carbon		1	0802-0057-1000			
7	Impeller w/Ceramic Magnet	Polypropylene	2.062 Dia.	1	0135-0043-0100			
	Impeller Encapsulated (Option)	Polypropylene	2.062 Dia.	1	0135-0130-0200			
8	Impeller w/Ceramic Magnet	Polypropylene	2.625 Dia.	1	0135-0026-0100			
	Impeller Encapsulated (Option)	Polypropylene	2.625 Dia.	1	0135-0133-0200			
9	Rear Housing	Kynar/Carbon Filled		1	0802-0043-1000			
10	Drive Magnet			1	0135-0126-0100			
11	Screw	Stainless Steel	#8-32 x 5/8 Lg.	4	0618-0027-1000			
12	Lock Washer	Stainless Steel	#8	4	0620-0010-1000			
13	Motor Bracket	Plastic		1	0135-0168-0100			
14	Motor, 1750 RPM, 115 V, 60 Hz			1	0135-0109-1000			
15	Motor, 1750 RPM, 230 V, 50/60 Hz			1	0135-0112-1000			
16	Motor, 3450 RPM, 115 V, 50/60 Hz			1	0135-0036-1000			
17	Motor, 3450 RPM, 230 V, 50/60 Hz			1	0135-0037-1000			

**MATERIALS IN CONTACT WITH SOLUTION**

**MDX-1/2:** Polypropylene, Ceramic Magnet, Buna N, Kynar/Carbon Filled  
**MDX-5/8:** Polypropylene, Ceramic Magnet, Buna N, Kynar/Carbon Filled  
**MDX-3-1/2:** Polypropylene, Ceramic Magnet, Buna N, Kynar/Carbon Filled, Ryton/Teflon/Carbon, Stainless Steel  
**MDX-3-5/8:** Polypropylene, Ceramic Magnet, Buna N, Kynar/Carbon Filled, Ryton/Teflon/Carbon, Stainless Steel

**NOTE:** Contact Factory for other materials and/or parts not listed.

0135-0107-1000 R24