



# MARCH PUMPS

1819 PICKWICK AVE., GLENVIEW, IL 60026-1306, U.S.A  
 PHONE: (847) 729-5300 - FAX: (847) 729-7062  
 WWW.MARCHPUMP.COM

## MDX-1/2, MDX-3 1/2, MDX-5/8, MDX-3 5/8

### DESCRIPTION:

Series MDX are centrifugal magnetic drive pumps, eliminating the need for a shaft seal. Pumps can be serviced with a screwdriver. See the parts list for a breakdown of parts.

### OPERATION:

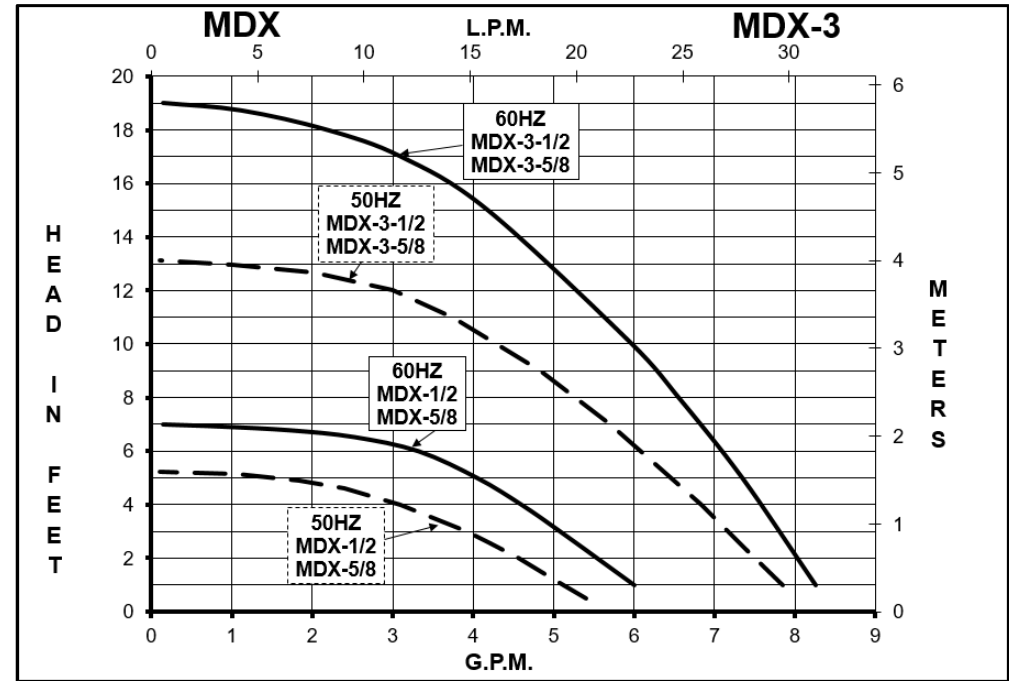
Pumps are not self-priming, lack a suction lift, and thus require a **flooded suction**. Pumps **cannot be run dry** because the impeller requires the liquid being pumped for lubrication. For application assistance, contact March Pump.

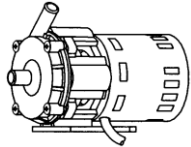
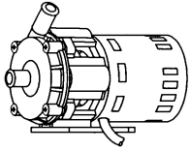
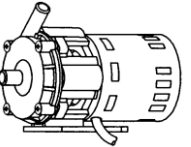
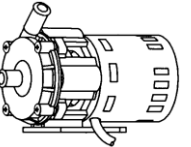
### ELECTRICAL:

All models have air cooled motors that are U.L. listed and are rated for continuous duty. Motors have a 3 foot (0.9 m) cord. Air cooled motors are separate voltage 115 Volt 60 Hz, 115 Volt 50/60 Hz, or 230 Volt 50/60 Hz. Motors are not dual voltage.

### LIMITED WARRANTY:

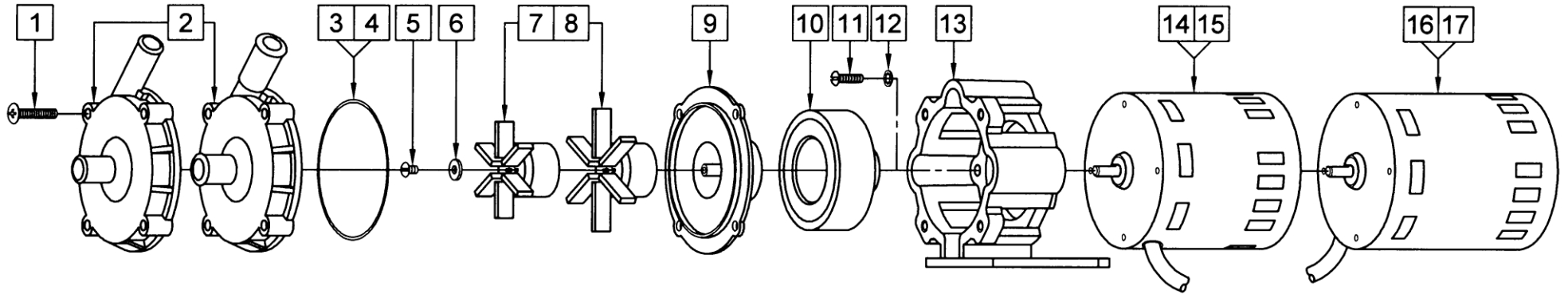
March pumps are guaranteed only against defects in workmanship or materials for a period of one year from date of manufacture pumping water. For the complete warranty and to register online go to [www.marchpump.com/warranty-registration](http://www.marchpump.com/warranty-registration)



SPECIFICATIONS	MDX-1/2				MDX-5/8				MDX-3-1/2				MDX-3-5/8																		
																															
Product #	115 V	0135-0006-0200				0135-0006-0100				0135-0006-0400				0135-0006-0300																	
	230 V	0135-0163-0100				0135-0163-0200				0135-0163-0300				0135-0163-0400																	
Inlet - Outlet	1/2" OD - 1/2" OD				5/8" OD - 5/8" OD				1/2" OD - 1/2" OD				5/8" OD - 5/8" OD																		
Max Internal Pressure	50 psi (344 kPa)				50 psi (344 kPa)				50 psi (344 kPa)				50 psi (344 kPa)																		
Max Liquid Temperature	190 °F (87 °C)				190 °F (87 °C)				190 °F (87 °C)				190 °F (87 °C)																		
MODEL	60 Hz											50 Hz											Height		Width		Length		Packed Weight		
	Max Flow	gpm	lpm	Max Head	ft	psi	m	ELECTRICAL				Max Flow	gpm	lpm	Max Head	ft	psi	m	ELECTRICAL				Inches	cm	Inches	cm	Inches	cm	lbs	kg	
MDX-1/2	6	22.7	7	3.03	2.13	1	115	0.94	1/55	0.014	1750	5.8	22	5.2	2.3	1.6	1	230	0.5	1/40	0.019	1300	4.94	12.5	3.88	9.8	7.09	18.0	4.50	2.04	
							230	0.45	1/40	0.019								1300	4.94	12.5	3.88	9.8	7.34	18.6	5.05	2.29					
MDX-5/8	6	22.7	7	3.03	2.13	1	115	0.94	1/55	0.014	1750	5.8	22	5.2	2.3	1.6	1	230	0.5	1/40	0.019	1300	4.97	12.6	3.88	9.8	7.09	18.0	4.55	2.06	
							230	0.45	1/40	0.019								1300	4.97	12.6	3.88	9.8	7.34	18.6	5.05	2.29					
MDX-3-1/2	8.5	32.2	19	8.2	5.8	1	115	1.55	1/25	0.030	3450	7.9	30	13.1	5.7	4	1	230	0.7	1/25	0.030	2850	4.94	12.5	3.88	9.8	7.69	19.5	5.20	2.35	
							230	0.7	1/25	0.030	2850							4.94	12.5	3.88	9.8	8.11	20.5	5.20	2.35						
MDX-3-5/8	8.5	32.2	19	8.2	5.8	1	115	1.55	1/25	0.030	3450	7.9	30	13.1	5.7	4	1	230	0.7	1/25	0.030	2850	4.97	12.6	3.88	9.8	7.69	19.5	5.20	2.35	
							230	0.7	1/25	0.030	2850							4.97	12.6	3.88	9.8	8.11	20.5	5.15	2.33						

All specifications & data are based on pumping water & are intended as a guideline only. Specifications may vary with different motors.

## PARTS LIST



**NOTE:** When attaching the Drive Magnet to the motor shaft, position the face of the Drive Magnet 1/16 inch below the face of the Motor Bracket.

#	DESCRIPTION	MATERIAL	SIZE (Inches)	QTY.	MDX-1/2	MDX-5/8	MDX-3-1/2	MDX-3-5/8
1	Screw	Stainless Steel	#10-32 x 1 Lg.	4	0135-0180-1000			
2	Front Housing	Polypropylene	1/2 OD Inlet & Outlet	1	0135-0118-1000		0135-0118-1000	
			5/8 OD Inlet & Outlet	1		0135-0117-1000		0135-0117-1000
3	"O" Ring	Buna N	1/16 CS x 3 OD	1	0135-0007-1000			
4	"O" Ring (Option)	Viton	1/16 CS x 3 OD	1	0135-0023-1000			
5	Screw	Stainless Steel	#8-32 x 1/4 Lg.	1			0135-0042-1000	
6	Thrust Washer	Ryton/Teflon/Carbon		1			0802-0057-1000	
7	Impeller w/Ceramic Magnet	Polypropylene	2.062 Dia.	1			0135-0043-0100	
	Impeller Encapsulated (Option)	Polypropylene	2.062 Dia.	1			0135-0130-0200	
8	Impeller w/Ceramic Magnet	Polypropylene	2.625 Dia.	1	0135-0026-0100			
	Impeller Encapsulated (Option)	Polypropylene	2.625 Dia.	1	0135-0133-0200			
9	Rear Housing	Kynar/Carbon Filled		1		0802-0043-1000		
10	Drive Magnet			1		0135-0126-0100		
11	Screw	Stainless Steel	#8-32 x 5/8 Lg.	4		0618-0027-1000		
12	Lock Washer	Stainless Steel	#8	4		0620-0010-1000		
13	Motor Bracket	Plastic		1		0135-0168-0100		
14	Motor, 1750 RPM, 115 V, 60 Hz			1	0135-0109-1000			
15	Motor, 1750 RPM, 230 V, 50/60 Hz			1	0135-0112-1000			
16	Motor, 3450 RPM, 115 V, 50/60 Hz			1			0135-0036-1000	
17	Motor, 3450 RPM, 230 V, 50/60 Hz			1			0135-0037-1000	

### MATERIALS IN CONTACT WITH SOLUTION

**MDX-1/2:** Polypropylene, Ceramic Magnet, Buna N, Kynar/Carbon Filled

**MDX-5/8:** Polypropylene, Ceramic Magnet, Buna N, Kynar/Carbon Filled

**MDX-3-1/2:** Polypropylene, Ceramic Magnet, Buna N, Kynar/Carbon Filled, Ryton/Teflon/Carbon, Stainless Steel

**MDX-3-5/8:** Polypropylene, Ceramic Magnet, Buna N, Kynar/Carbon Filled, Ryton/Teflon/Carbon, Stainless Steel

NOTE: Contact Factory for other materials and/or parts not listed.

0135-0107-1000 R24