



MARCH PUMPS

1819 PICKWICK AVE., GLENVIEW, IL 60026-1306, U.S.A
 PHONE: (847) 729-5300 - FAX: (847) 729-7062
 WWW.MARCHPUMP.COM

AC-4C-MD, BC-4C-MD, AC-4A-MD, BC-4A-MD, BC-4K-MD

DESCRIPTION: Series 4 are centrifugal magnetic drive pumps, eliminating the need for a shaft seal. Pumps can be serviced with a screwdriver. See the parts list for a breakdown of parts.

OPERATION:

Pumps are not self-priming, lack a suction lift, and thus require a **flooded suction**. Pumps **cannot be run dry** because the impeller requires the liquid being pumped for lubrication. For liquids with a specific gravity greater than water, have a higher viscosity, or for elevated temperatures, a trimmed impeller may be necessary. For application assistance, contact March Pump.

ELECTRICAL:

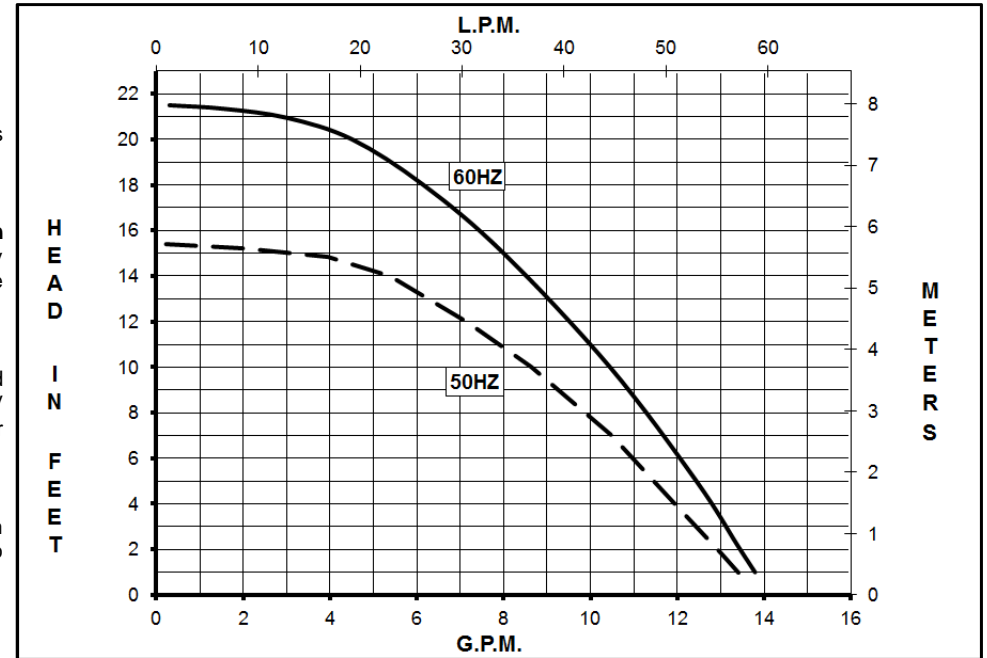
AC models have an Air Cooled Motor. BC models have a Blast Cooled Motor and they have an encapsulated impeller magnet. Motors are available in different electrical configurations such as 115 V 50/60 Hz, or 230 V 50/60 Hz, 1 phase. Motors have a 3 ft. (0.9 m) cord. All models have U.L. listed motors, which are rated for continuous duty.

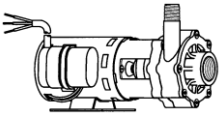
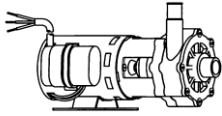
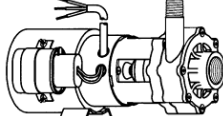
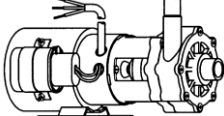
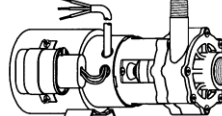
LIMITED WARRANTY:

March pumps are guaranteed only against defects in workmanship or materials for a period of one year from date of manufacture pumping water. For the complete warranty and to register online go to www.marchpump.com/warranty-registration

MODEL ABBREVIATIONS:

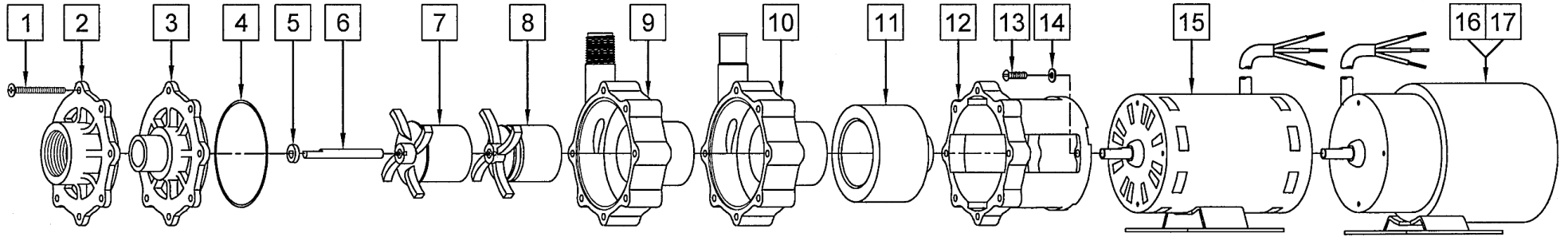
C/K: Threaded Inlet/Outlet, A: Smooth Inlet/Outlet, K: Kynar, C/A: Polypropylene



SPECIFICATIONS		AC-4C-MD	AC-4A-MD	BC-4C-MD	BC-4A-MD	BC-4K-MD																						
																												
Product #	115 V 230 V	0145-0010-0100	0145-0052-0100	0145-0010-0400 0145-0010-0500	0145-0048-0200 0145-0048-0100	0145-0010-0800 0145-0010-0900																						
Inlet - Outlet		1" FPT - 1/2" MPT	1" OD - 3/4" OD	1" FPT - 1/2" MPT	1" OD - 3/4" OD	1" FPT - 1/2" MPT																						
Max Internal Pressure		50 psi (344 kPa)	50 psi (344 kPa)	50 psi (344 kPa)	50 psi (344 kPa)	75 psi (517 kPa)																						
Max Liquid Temperature		190 °F (87 °C)	190 °F (87 °C)	190 °F (87 °C)	190 °F (87 °C)	200 °F (93 °C)																						
MODEL	60 Hz										50 Hz										Height		Width		Length		Packed Weight	
	Max Flow gpm lpm	Max Head ft psi		Ph	V	A	Hp	kW	Rpm	Max Flow gpm lpm	Max Head ft psi		Ph	V	A	Hp	kW	Rpm	Inches	cm	Inches	cm	Inches	cm	lbs	kg		
AC-4C-MD	14 53	21.5 9.3	6.55	1	115 1.75	1/12	0.062	3450	13.2 50	15.4 6.7	4.7	1	115 1.75	1/12	0.062	2850	5.57 14.1	5.11 12.9	9.77 24.8	8.05 3.65	8.05 3.65							
AC-4A-MD	14 53	21.5 9.3	6.55	1	115 1.75	1/12	0.062	3450	13.2 50	15.4 6.7	4.7	1	115 1.75	1/12	0.062	2850	5.57 14.1	5.11 12.9	10.34 26.2	8.05 3.65	8.05 3.65							
BC-4C-MD	14 53	21.5 9.3	6.55	1	115 1.9	1/10	0.075	3450	13.2 50	15.4 6.7	4.7	1	115 1.9	1/10	0.075	2850	5.65 14.1	5.36 13.6	10.18 25.8	8.15 3.69	8.15 3.69							
					230 0.75	1/12	0.062						230 0.75	1/12	0.062					8.15 3.69	8.15 3.69							
BC-4A-MD	14 53	21.5 9.3	6.55	1	115 1.9	1/10	0.075	3450	13.2 50	15.4 6.7	4.7	1	115 1.9	1/10	0.075	2850	5.65 14.1	5.36 13.6	10.74 27.2	8.15 3.69	8.15 3.69							
					230 0.75	1/12	0.062						230 0.75	1/12	0.062					8.15 3.69	8.15 3.69							
BC-4K-MD	14 53	21.5 9.3	6.55	1	115 1.9	1/10	0.075	3450	13.2 50	15.4 6.7	4.7	1	115 1.9	1/10	0.075	2850	5.65 14.1	5.36 13.6	10.18 25.8	8.40 3.81	8.40 3.81							
					230 0.75	1/12	0.062						230 0.75	1/12	0.062					8.40 3.81	8.40 3.81							

All specifications & data are based on pumping water & are intended as a guideline only. Specifications may vary with different motors.

PARTS LIST



NOTE: When attaching the Drive Magnet to the motor shaft, position the face of the Drive Magnet 1/16 inch below the face of the Motor Bracket.

#	AC-4C-MD	#	BC-4C-MD	#	BC-4K-MD
1	0150-0021-1000 7 #8-32 x 1-3/4" Lg. Screw (Stainless Steel)	1	0150-0021-1000 7 #8-32 x 1-3/4" Lg. Screw (Stainless Steel)	1	0150-0021-1000 7 #8-32 x 1-3/4" Lg. Screw (Stainless Steel)
2	0150-0032-1000 1 Cover with 1" FPT Inlet (Polypropylene)	2	0150-0032-1000 1 Cover with 1" FPT Inlet (Polypropylene)	2	0150-0124-1000 1 Cover with 1" FPT Inlet (Kynar/Glass)
4A	0750-0987-1000 1 0.078" CS x 2.834" ID "O" Ring (Buna-N)	4A	0750-0986-1000 1 0.078" CS x 2.834" ID "O" Ring (Viton)	4A	0750-0986-1000 1 0.078" CS x 2.834" ID "O" Ring (Viton)
4B	0150-0212-1000 1 0.078"CS x 2.893"ID "O" Ring (Viton/Teflon) - Option	4B	0150-0212-1000 1 0.078"CS x 2.893"ID "O" Ring (Viton/Teflon) - Option	4B	0150-0212-1000 1 0.078"CS x 2.893"ID "O" Ring (Viton/Teflon) - Option
5	0130-0028-1000 1 Thrust Washer (Ceramic)	5	0130-0028-1000 1 Thrust Washer (Ceramic)	5	0130-0028-1000 1 Thrust Washer (Ceramic)
6	0130-0024-1000 1 Shaft (Ceramic)	6	0130-0024-1000 1 Shaft (Ceramic)	6	0130-0024-1000 1 Shaft (Ceramic)
8	0145-0011-0100 1 Bare Magnet Impeller (Polypro./Ceramic)	7	0145-0033-0200 1 Encapsulated Impeller (Polypropylene)	7	0145-0039-0200 1 Encapsulated Impeller (Kynar/Carbon)
9	0150-0031-0100 1 Rear Housing w/Thrust Washer (Polypro./Ceramic)	9	0150-0031-0100 1 Rear Housing w/Thrust Washer (Polypro./Ceramic)	9	0150-0031-0100 1 Rear Housing w/Thrust Washer (Polypro./Ceramic)
11	0145-0027-0100 1 Drive Magnet	11	0145-0027-0100 1 Drive Magnet	11	0145-0027-0100 1 Drive Magnet
12	0145-0010-1000 1 Motor Bracket (Plastic)	12	0145-0010-1000 1 Motor Bracket (Plastic)	12	0145-0010-1000 1 Motor Bracket (Plastic)
13	0618-0027-1000 4 #8-32 x 5/8 Lg. Screw (Stainless Steel)	13	0618-0027-1000 4 #8-32 x 5/8 Lg. Screw (Stainless Steel)	13	0618-0027-1000 4 #8-32 x 5/8 Lg. Screw (Stainless Steel)
14	0858-0004-1000 4 #8 Washer Flat (Stainless Steel)	14	0858-0004-1000 4 #8 Washer Flat (Stainless Steel)	14	0858-0004-1000 4 #8 Washer Flat (Stainless Steel)
15	0145-0012-1000 1 AC Motor, 115 V, 50/60 Hz	16	0145-0035-1000 1 BC Motor, 115 V, 50/60 Hz	16	0145-0035-1000 1 BC Motor, 115 V, 50/60 Hz
W	0145-0045-0200 1 Wet End Kit (Items: 1, 2, 4A, 5, 6, 8, 9)	17	0145-0036-1000 1 BC Motor, 230 V, 50/60 Hz	17	0145-0036-1000 1 BC Motor, 230 V, 50/60 Hz
		W	0145-0046-0200 1 Wet End Kit (Items: 1, 2, 4A, 5, 6, 7, 9)		

#	AC-4A-MD	#	BC-4A-MD
1	0150-0021-1000 7 #8-32 x 1-3/4" Lg. Screw (Stainless Steel)	1	0150-0021-1000 7 #8-32 x 1-3/4" Lg. Screw (Stainless Steel)
3	0150-0150-1000 1 Cover with 1" OD Inlet (Polypropylene)	3	0150-0150-1000 1 Cover with 1" OD Inlet (Polypropylene)
4A	0750-0987-1000 1 0.078" CS x 2.834" ID "O" Ring (Buna-N)	4A	0750-0986-1000 1 0.078" CS x 2.834" ID "O" Ring (Viton)
4B	0150-0212-1000 1 0.078" CS x 2.893" ID "O" Ring (Viton/Teflon) - Option	4B	0150-0212-1000 1 0.078" CS x 2.893" ID "O" Ring (Viton/Teflon) - Option
5	0130-0028-1000 1 Thrust Washer (Ceramic)	5	0130-0028-1000 1 Thrust Washer (Ceramic)
6	0130-0024-1000 1 Shaft (Ceramic)	6	0130-0024-1000 1 Shaft (Ceramic)
8	0145-0011-0100 1 Impeller with bare Ceramic Magnet (Polypropylene)	7	0145-0033-0200 1 Encapsulated Impeller (Polypropylene)
10	0150-0159-0100 1 Rear Housing with 3/4" OD Outlet & Thrust Washer (Polypropylene/Ceramic)	10	0150-0159-0100 1 Rear Housing with 3/4" OD Outlet & Thrust Washer (Polypropylene/Ceramic)
11	0145-0027-0100 1 Drive Magnet	11	0145-0027-0100 1 Drive Magnet
12	0145-0010-1000 1 Motor Bracket (Plastic)	12	0145-0010-1000 1 Motor Bracket (Plastic)
13	0618-0027-1000 4 #8-32 x 5/8 Lg. Screw (Stainless Steel)	13	0618-0027-1000 4 #8-32 x 5/8 Lg. Screw (Stainless Steel)
14	0858-0004-1000 4 #8 Washer Flat (Stainless Steel)	14	0858-0004-1000 4 #8 Washer Flat (Stainless Steel)
15	0145-0012-1000 1 AC Motor, 115 V, 50/60 Hz	16	0145-0035-1000 1 BC Motor, 115 V, 50/60 Hz
		17	0145-0036-1000 1 BC Motor, 230 V, 50/60 Hz

Materials in Contact with Solution:

AC-4C-MD & AC-4A-MD	BC-4C-MD & BC-4A-MD	BC-4K-MD:
Polypropylene, Ceramic, Buna N, Ceramic Magnet	Polypropylene, Ceramic, Viton	Kynar/Carbon Filled & Kynar/Glass Filled, Viton, Ceramic
NOTE: Contact Factory for other materials and/or parts not listed.		

0145-0023-1000 R29