



MARCH PUMPS

1819 PICKWICK AVE., GLENVIEW, IL 60026-1306, U.S.A
 PHONE: (847) 729-5300 - FAX: (847) 729-7062
 WWW.MARCHPUMP.COM

AC-3CP-MD, AC-3AP-MD, BC-3CP-MD, BC-3AP-MD BC-3K-MD

DESCRIPTION:

Series 3 are centrifugal magnetic drive pumps, eliminating the need for a shaft seal. Pumps are serviceable with a screwdriver. See the parts list for a breakdown of parts.

OPERATION:

Pumps are not self-priming, lack a suction lift, and thus require a **flooded suction**. Pumps **cannot be run dry** because the impeller requires the liquid being pumped for lubrication. For liquids with a specific gravity greater than water, have a higher viscosity, or for elevated temperatures, a trimmed impeller may be necessary. For application assistance, contact March Pump.

ELECTRICAL:

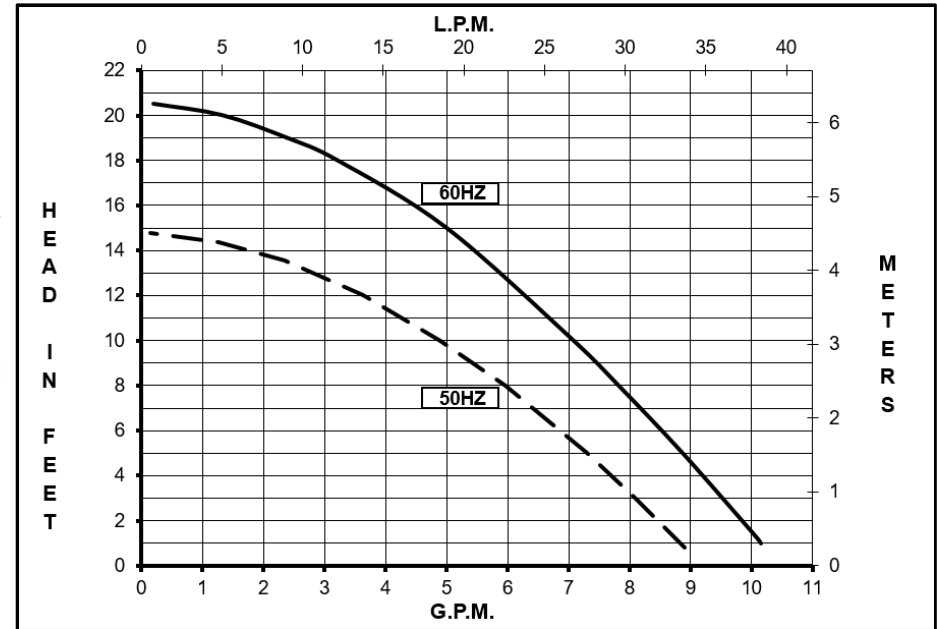
Motors are available in different electrical configurations such as 115 Volt 60 Hz, 115 Volt 50/60 Hz, or 230 Volt 50/60 Hz, 1 phase. The motors are U.L. listed and rated as continuous duty.

LIMITED WARRANTY:

March pumps are guaranteed only against defects in workmanship or materials for a period of one year from date of manufacture pumping water. For the complete warranty and to register online go to www.marchpump.com/warranty-registration

Model Abbreviations:

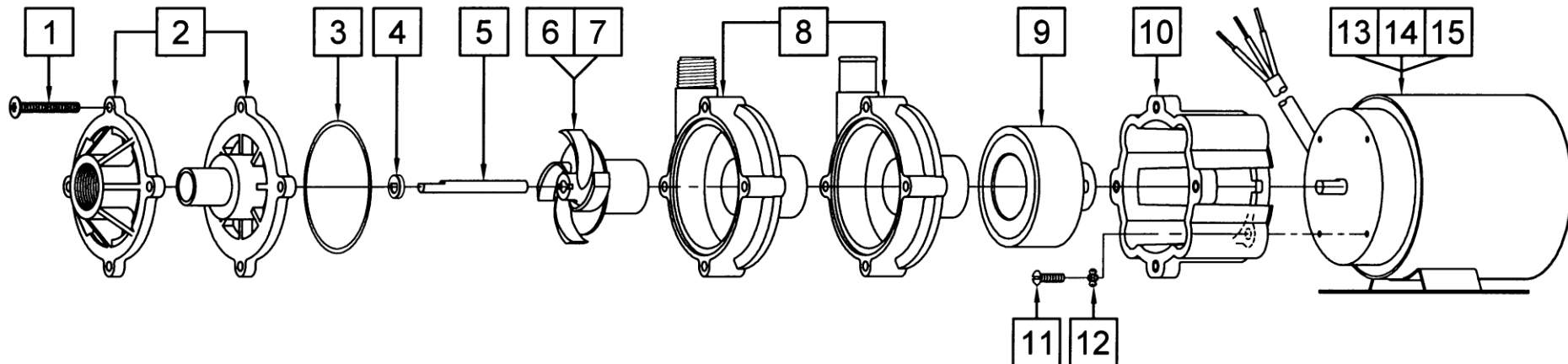
C: Threaded Inlet/Outlet, A: Smooth Inlet/Outlet, K: Kynar, AC: Air Cooled Motor, BC: Blast Cooled Motor



SPECIFICATIONS	AC-3CP-MD		AC-3AP-MD		BC-3CP-MD		BC-3AP-MD		BC-3K-MD																					
Product #	115 V	0130-0018-0100	0130-0103-0100		0130-0018-0300		0130-0105-0100		0130-0138-0100																					
	230 V	0130-0018-0200	0130-0103-0200		0130-0018-0600		0130-0105-0200		0130-0138-0200																					
Inlet - Outlet	3/4" FPT - 1/2" MPT		3/4" OD - 3/4" OD		3/4" FPT - 1/2" MPT		3/4" OD - 3/4" OD		3/4" FPT - 1/2" MPT																					
Max Internal Pressure	50 psi (344 kPa)		50 psi (344 kPa)		50 psi (344 kPa)		50 psi (344 kPa)		75 psi (517 kPa)																					
Max Liquid Temperature	190 °F (87 °C)		190 °F (87 °C)		190 °F (87 °C)		190 °F (87 °C)		200 °F (93 °C)																					
MODEL	60 Hz											50 Hz											Height		Width		Length		Packed Weight	
	Max Flow	Max Flow	Max Head		ELECTRICAL						Max Flow	Max Flow	Max Head		ELECTRICAL						Inches	cm	Inches	cm	Inches	cm	lbs	kg		
	gpm	lpm	ft	psi	m	Ph	V	A	Hp	kW	Rpm	gpm	lpm	ft	psi	m	Ph	V	A	Hp	kW	Rpm								
AC-3CP-MD	10	37.8	20.5	8.9	6.25	1	115	2.3	1/15	0.04	3450	8.7	33	14.7	6.4	4.5	1	230	1.0	1/15	0.04	2850	5	12.7	3.91	9.9	8.12	20.6	6.55	2.97
							230	0.9															5	12.7	4	10.1	8.77	22.2	7.50	3.40
AC-3AP-MD	10	37.8	20.5	8.9	6.25	1	115	2.3	1/15	0.04	3450	8.7	33	14.7	6.4	4.5	1	230	1.0	1/15	0.04	2850	5	12.7	3.91	9.9	8.90	22.6	6.55	2.97
							230	0.9															5	12.7	4	10.1	9.55	24.2	7.50	3.40
BC-3CP-MD	10	37.8	20.5	8.9	6.25	1	115	2.1	1/14	0.05	3450	8.7	33	14.7	6.4	4.5	1	115	2.4	1/14	0.05	2850	4.94	12.5	3.91	9.9	9.06	23.0	7.90	3.58
							230	1.0	1/15	0.04								230	1.1	1/15	0.04		4.94	12.5	3.91	9.9	9.06	23.0	8.10	3.67
BC-3AP-MD	10	37.8	20.5	8.9	6.25	1	115	2.1	1/14	0.05	3450	8.7	33	14.7	6.4	4.5	1	115	2.4	1/14	0.05	2850	4.94	12.5	3.91	9.9	9.84	25.0	7.90	3.58
							230	1.0	1/15	0.04								230	1.1	1/15	0.04		4.94	12.5	3.91	9.9	9.84	25.0	8.10	3.67
BC-3K-MD	10	37.8	20.5	8.9	6.25	1	115	2.1	1/14	0.05	3450	8.7	33	14.7	6.4	4.5	1	115	2.4	1/14	0.05	2850	4.94	12.5	3.91	9.9	9.06	23.0	7.90	3.58
							230	1.0	1/15	0.04								230	1.1	1/15	0.04		4.94	12.5	3.91	9.9	9.06	23.0	8.10	3.67

All specifications/values are based on pumping water and are intended as a guideline only. Values may vary with different motors.

PARTS LIST



NOTE: When attaching the Drive Magnet to the motor shaft, position the face of the Drive Magnet 3/32 inch below the face of the Motor Bracket.

AC-3CP-MD				AC-3AP-MD			
#				#			
1	0823-0008-1000	4	#10-32 x 1-1/2" Long Screw (Stainless)	1	0823-0008-1000	4	#10-32 x 1-1/2" Long Screw (Stainless)
2	0130-0021-1000	1	Cover with 3/4" FPT Inlet (Polypropylene)	2	0130-0064-1000	1	Cover with 3/4" OD Inlet (Polypropylene)
3A	0130-0011-1000	1	3/32" CS x 2-13/16" OD "O" Ring (Buna)	3A	0130-0011-1000	1	3/32" CS x 2-13/16" OD "O" Ring (Buna)
3B	0130-0121-1000	1	3/32" CS x 2-13/16" OD "O" Ring (Viton/Teflon) - Option	3B	0130-0121-1000	1	3/32" CS x 2-13/16" OD "O" Ring (Viton/Teflon) - Option
4	0130-0028-1000	1	Thrust Washer (Ceramic)	4	0130-0028-1000	1	Thrust Washer (Ceramic)
5	0130-0024-1000	1	Shaft (Ceramic)	5	0130-0024-1000	1	Shaft (Ceramic)
6	0130-0020-0100	1	Impeller with Bare Ceramic Magnet (Polypropylene)	6	0130-0020-0100	1	Impeller with Bare Ceramic Magnet (Polypropylene)
8	0130-0018-1000	1	Rear Housing with 1/2" MPT Outlet (Polypropylene)	8	0130-0102-1000	1	Rear Housing with 3/4" OD Outlet (Polypropylene)
9	0130-0043-0200	1	Drive Magnet	9	0130-0043-0200	1	Drive Magnet
10	0130-0066-0100	1	Motor Bracket (Plastic)	10	0130-0066-0100	1	Motor Bracket (Plastic)
11	0618-0027-1000	4	#8-32 x 5/8" Long Screw (Stainless)	11	0618-0027-1000	4	#8-32 x 5/8" Long Screw (Stainless)
12	0140-0014-1000	4	#8 Lock Washer (Steel)	12	0140-0014-1000	4	#8 Lock Washer (Steel)
13	0130-0022-1000	1	AC Motor, 115 V, 60 Hz	13	0130-0022-1000	1	AC Motor, 115 V, 60 Hz
15	0130-0049-1200	1	AC or BC Motor, 230 V, 50/60 Hz	15	0130-0049-1200	1	AC or BC Motor, 230 V, 50/60 Hz
W	0130-0113-0200	1	Wet End Kit (Items: 1, 2, 3A, 4, 5, 6, 8)				

BC-3CP-MD		BC-3AP-MD		BC-3K-MD		
#		#		#		
1	0823-0008-1000	4	#10-32 x 1-1/2" Long Screw (Stainless)	0823-0008-1000	4	#10-32 x 1-1/2" Long Screw (Stainless)
2	0130-0021-1000	1	Cover with 3/4" FPT Inlet (Polypropylene)	0130-0064-1000	1	Cover with 3/4" OD Inlet (Polypropylene)
3A	0130-0033-1000	1	3/32" CS x 2-13/16" OD "O" Ring (Viton)	0130-0033-1000	1	3/32" CS x 2-13/16" OD "O" Ring (Viton)
3B	0130-0121-1000	1	3/32" CS x 2-13/16" OD "O" Ring (Viton/Teflon) - Option	0130-0121-1000	1	3/32" CS x 2-13/16" OD "O" Ring (Viton/Teflon) - Option
4	0130-0028-1000	1	Thrust Washer (Ceramic)	0130-0028-1000	1	Thrust Washer (Ceramic)
5	0130-0024-1000	1	Shaft (Ceramic)	0130-0024-1000	1	Shaft (Ceramic)
7	0130-0069-0200	1	Encapsulated Impeller (Polypropylene)	0130-0069-0200	1	Encapsulated Impeller (Polypropylene)
8	0130-0018-1000	1	Rear Housing with 1/2" MPT Outlet (Polypropylene)	0130-0102-1000	1	Rear Housing with 3/4" OD Outlet (Polypropylene)
9	0130-0043-0200	1	Drive Magnet	0130-0043-0200	1	Drive Magnet
10	0130-0066-0100	1	Motor Bracket (Plastic)	0130-0066-0100	1	Motor Bracket (Plastic)
11	0618-0027-1000	4	#8-32 x 5/8" Long Screw (Stainless)	0618-0027-1000	4	#8-32 x 5/8" Long Screw (Stainless)
12	0140-0014-1000	4	#8 Lock Washer (Steel)	0140-0014-1000	4	#8 Lock Washer (Steel)
14	0130-0140-1200	1	BC Motor, 115 V, 50/60 Hz (Not Shown)	0130-0140-1200	1	BC Motor, 115 V, 50/60 Hz (Not Shown)
15	0130-0049-1200	1	AC or BC Motor, 230 V, 50/60 Hz	0130-0049-1200	1	AC or BC Motor, 230 V, 50/60 Hz
W	0130-0114-0200	1	Wet End Kit (Items: 1, 2, 3A, 4, 5, 7, 8)			

Materials in Contact with Solution

AC-3CP-MD & AC-3AP-MD

Polypropylene, Ceramic, Buna N, Ceramic Magnet

BC-3CP-MD & BC-3AP-MD

Polypropylene, Ceramic, Viton

BC-3K-MD

Kynar/Carbon Filled, Ceramic, Viton

NOTE: Contact Factory for other materials and/or parts not listed.

0130-0032-1000 R31