



MARCH PUMPS

1819 PICKWICK AVE., GLENVIEW, IL 60026-1306, U.S.A
 PHONE: (847) 729-5300 - FAX: (847) 729-7062
 WWW.MARCHPUMP.COM

1A-MD, 1C-MD, 1U-MD

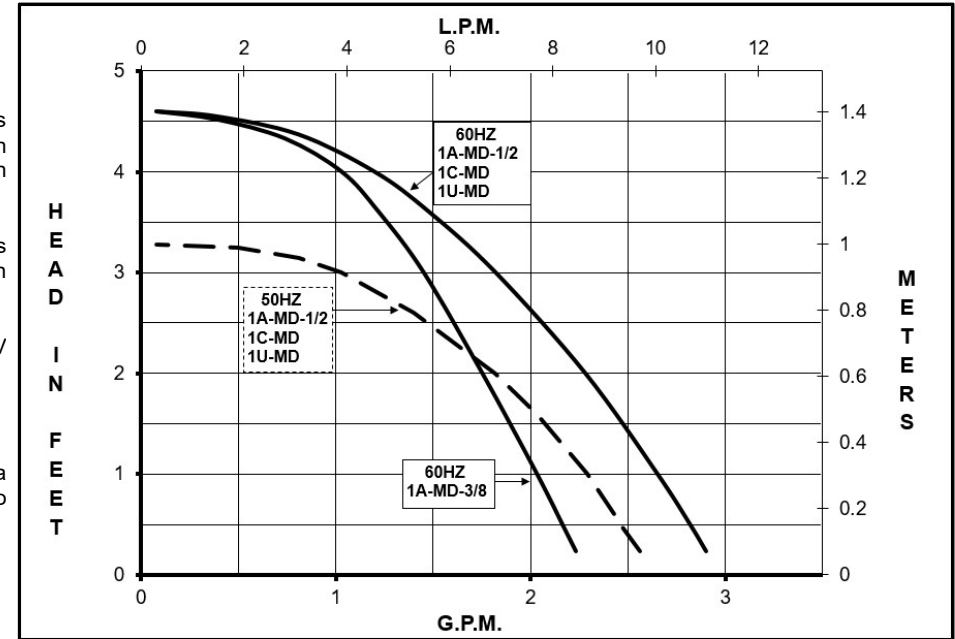
DESCRIPTION: Series 1 are centrifugal magnetic drive pumps, eliminating the need for a shaft seal. Pumps are serviceable with a screwdriver. The models are hermetically encapsulated, which allows the pumps to run fully submerged in many liquids or in open air for complete moisture protection. See the parts list for a breakdown of parts.

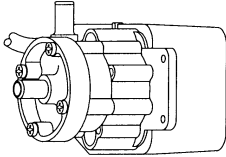
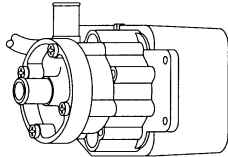
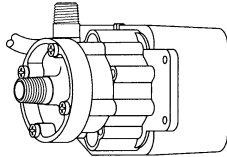
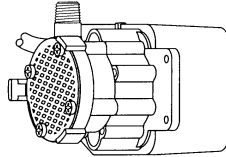
OPERATION: Pumps are not self-priming, lack a suction lift, and thus require a **flooded suction**. Pumps **cannot be run dry** because the impeller requires the liquid being pumped for lubrication. For application assistance, contact March Pump.

ELECTRICAL: Motors are available in different electrical configurations such as 115V 50/60HZ or 230V 50/60HZ 1 phase. The motors are U.L. listed and rated as continuous duty.
 - 115 Volt Motors have a 6-foot (1.8 m) long cord with plug.
 - 230 Volt Motors have a 6-foot (1.8 m) long cord without a plug.

LIMITED WARRANTY: March pumps are guaranteed only against defects in workmanship or materials for a period of one year from date of manufacture pumping water. For the complete warranty and to register online go to www.marchpump.com/warranty-registration

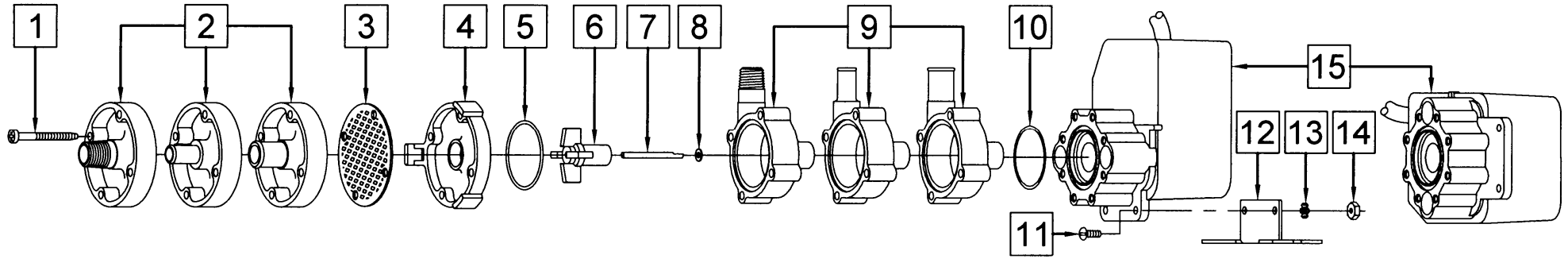
Model Abbreviations: A: Smooth Inlet/Outlet, C: Threaded Inlet/Outlet, U: Screen Inlet



SPECIFICATIONS		1A-MD-3/8					1A-MD-1/2					1C-MD					1U-MD													
																														
Product #	115 V	0115-0007-0100					0115-0007-0200					0115-0007-0300					0115-0007-0400													
	230 V	0115-0007-0600					0115-0007-0700					0115-0007-0800					0115-0007-0900													
Inlet - Outlet		3/8" OD - 3/8" OD					1/2" OD - 1/2" OD					1/4" MPT - 1/4" MPT					Screen - 1/4" MPT													
Max Internal Pressure		50 psi (344 kPa)					50 psi (344 kPa)					50 psi (344 kPa)					50 psi (344 kPa)													
Max Liquid Temperature		190 °F (87 °C) open air 160 °F / 71 °C submersible					190 °F (87 °C) open air 160 °F / 71 °C submersible					190 °F (87 °C) open air 160 °F / 71 °C submersible					190 °F (87 °C) open air 160 °F / 71 °C submersible													
MODEL	60 Hz											50 Hz											Height		Width		Length		Packed Weight	
	Max Flow		Max Head		ELECTRICAL							Max Flow		Max Head		ELECTRICAL														
	gpm	lpm	ft	psi	m	Ph	V	A	Hp	kW	Rpm	gpm	lpm	ft	psi	m	Ph	V	A	Hp	kW	Rpm	Inches	cm	Inches	cm	Inches	cm	lbs	kg
1A-MD-3/8	2.3	8.7	4.6	2.0	1.4	1	115	0.45	1/200	0.003	3200	2.0	7.5	3.3	1.4	1.0	1	115	0.45	1/200	0.003	2650	3.17	8.1	3.75	9.5	4.44	11.3	2.65	1.20
							230	0.23										230	0.23										2.60	1.17
1A-MD-1/2	3.0	11.3	4.6	2.0	1.4	1	115	0.45	1/200	0.003	3200	2.3	9.0	3.3	1.4	1.0	1	115	0.45	1/200	0.003	2650	3.17	8.1	3.75	9.5	4.44	11.3	2.65	1.20
							230	0.23										230	0.23										2.60	1.17
1C-MD	3.0	11.3	4.6	2.0	1.4	1	115	0.45	1/200	0.003	3200	2.3	9.0	3.3	1.4	1.0	1	115	0.45	1/200	0.003	2650	3.17	8.1	3.75	9.5	4.44	11.3	2.60	1.17
							230	0.23										230	0.23										2.55	1.15
1U-MD	3.0	11.3	4.6	2.0	1.4	1	115	0.45	1/200	0.003	3200	2.3	9.0	3.3	1.4	1.0	1	115	0.45	1/200	0.003	2650	3.17	8.1	3.75	9.5	3.83	9.7	2.65	1.20
							230	0.23										230	0.23										2.65	1.20

All specifications & data are based on pumping water & are intended as a guideline only. Specifications may vary with different motors.

PARTS LIST



#	1A-MD-3/8	#	1A-MD-1/2
1	0115-0062-1000 4 #7-19 x 1-7/16" Long Self-Tapping Screw (Stainless)	1	0115-0062-1000 4 #7-19 x 1-7/16" Long Self-Tapping Screw (Stainless)
2	0115-0075-1000 1 Cover with 3/8" OD Inlet (Polypropylene)	2	0115-0060-1000 1 Cover with 1/2" OD Inlet (Polypropylene)
5	0115-0018-1000 1 1/16" CS x 1-7/16" OD "O" Ring for Cover (Buna N)	5	0115-0018-1000 1 1/16" CS x 1-7/16" OD "O" Ring for Cover (Buna N)
6	0115-0119-1000 1 Encapsulated Impeller (Polypropylene)	6	0115-0119-1000 1 Encapsulated Impeller (Polypropylene)
7	0115-0032-1000 1 Shaft (316 Stainless)	7	0115-0032-1000 1 Shaft (316 Stainless)
8	0115-0033-1000 1 Thrust Washer (Carbon/Teflon)	8	0115-0033-1000 1 Thrust Washer (Carbon/Teflon)
9	0115-0074-1000 1 Rear Housing with 3/8" OD Outlet (Polypropylene)	9	0115-0059-1000 1 Rear Housing with 1/2" OD Outlet (Polypropylene)
10	0115-0017-1000 1 1/16" CS x 1-5/16" OD "O" Ring for Bracket (Buna N)	10	0115-0017-1000 1 1/16" CS x 1-5/16" OD "O" Ring for Bracket (Buna N)
15	Not Available - Epoxy Motor, Bracket, Cord Assembly (115 V 50/60 Hz) or (230 V 50/60 Hz)	15	Not Available - Epoxy Motor, Bracket, Cord Assembly (115 V 50/60 Hz) or (230 V 50/60 Hz)
#	1C-MD	#	1U-MD
1	0115-0062-1000 4 #7-19 x 1-7/16" Long Self-Tapping Screw (Stainless)	1	0115-0062-1000 4 #7-19 x 1-7/16" Long Self-Tapping Screw (Stainless)
2	0115-0058-1000 1 Cover with 1/4" MPT Inlet (Polypropylene)	3	0115-0012-1000 1 Inlet Screen (Delrin)
5	0115-0018-1000 1 1/16" CS x 1-7/16" OD "O" Ring for Cover (Buna N)	4	0115-0016-1000 1 Cover (Cyclocac)
6	0115-0119-1000 1 Encapsulated Impeller (Polypropylene)	5	0115-0018-1000 1 1/16" CS x 1-7/16" OD "O" Ring for Cover (Buna N)
7	0115-0032-1000 1 Shaft (316 Stainless)	6	0115-0119-1000 1 Encapsulated Impeller (Polypropylene)
8	0115-0033-1000 1 Thrust Washer (Carbon/Teflon)	7	0115-0032-1000 1 Shaft (316 Stainless)
9	0115-0057-1000 1 Rear Housing with 1/4" MPT Outlet (Polypropylene)	8	0115-0033-1000 1 Thrust Washer (Carbon/Teflon)
10	0115-0017-1000 1 1/16" CS x 1-5/16" OD "O" Ring for Bracket (Buna N)	9	0115-0057-1000 1 Rear Housing with 1/4" MPT Outlet (Polypropylene)
15	Not Available - Epoxy Motor, Bracket, Cord Assembly (115 V 50/60 Hz) or (230 V 50/60 Hz)	10	0115-0017-1000 1 1/16" CS x 1-5/16" OD "O" Ring for Bracket (Buna N)
		15	Not Available - Epoxy Motor, Bracket, Cord Assembly (115 V 50/60 Hz) or (230 V 50/60 Hz)
#	OPTIONS	Materials in Contact with Solution:	
2	0115-0096-1000 1 Cover with 1/2" OD Inlet (Kynar)	<p><u>Open Air:</u> Polypropylene, Buna N, 316 Stainless Steel, & Carbon/Teflon Washer.</p> <p><u>When Submerged:</u> The following additional materials are in contact: Epoxy, Noryl, Cyclocac, Delrin, and SJT cord.</p>	
5	0115-0061-1000 1 1/16" CS x 1-7/16" OD "O" Ring for Cover (Viton)		
5	0115-0069-1000 1 1/16" CS x 1-7/16" OD "O" Ring for Cover (Teflon)		
6	0115-0097-0100 1 Impeller with bare Ceramic Magnet (Kynar)		
9	0115-0095-1000 1 Rear Housing with 1/2" OD Outlet (Kynar)		
11	0455-0038-1000 2 #6-32 x 3/8" Long Screw (Stainless)		
12	0115-0081-1000 1 Base (Stainless)		
13	0455-0037-1000 2 #6 Lock Washer (Stainless)		
14	0455-0043-1000 2 #6-32 Nut (Steel)		

NOTE: Contact Factory for other materials and/or parts not listed.

0115-0035-1000 R35