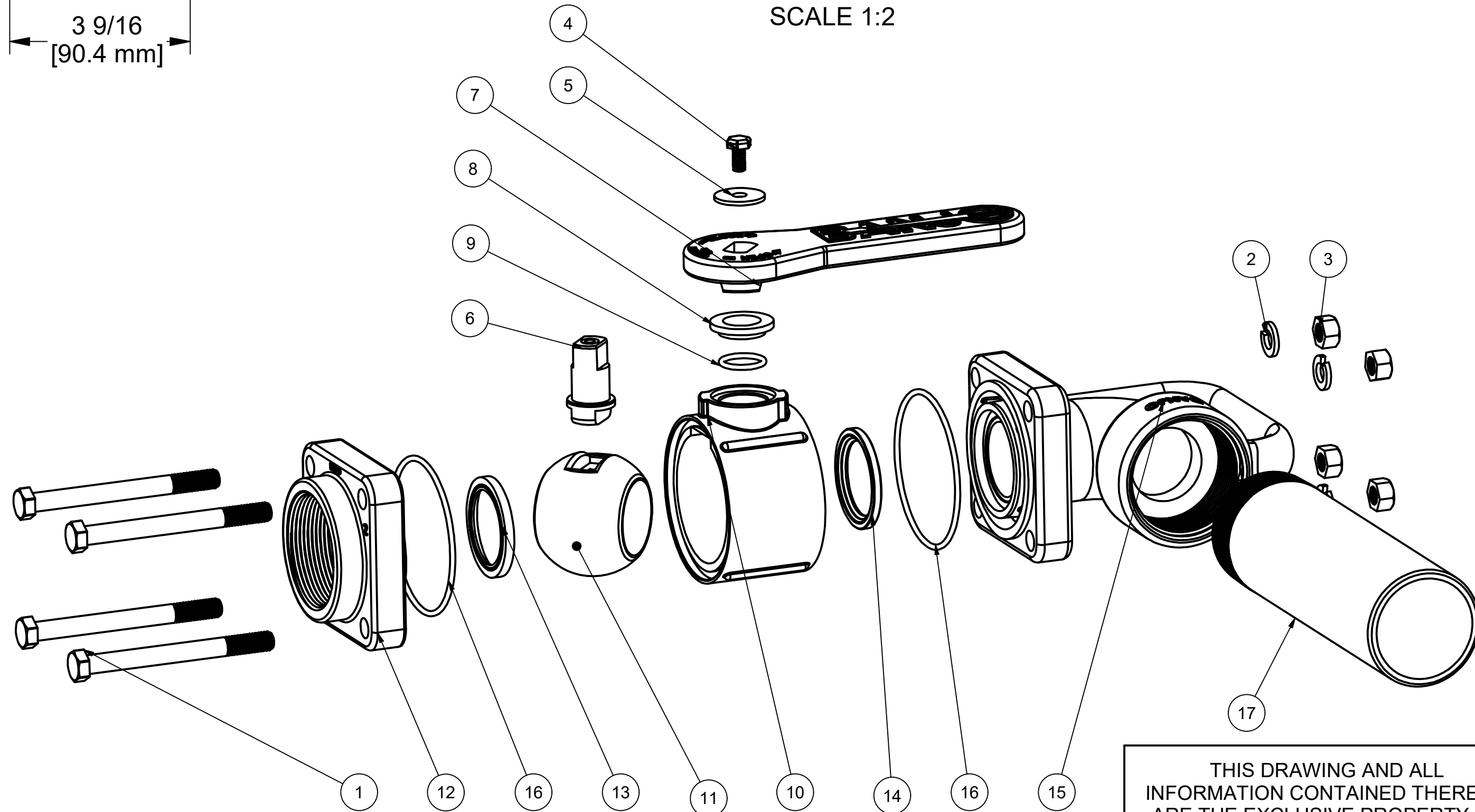


PARTS LIST			
ITEM	QTY	PART NUMBER	DESCRIPTION
1	4	V20017	3/8-16 X 4" HHCS
2	4	V20018	3/8" LOCKWASHER
3	4	V20019	3/8" HEX NUT
4	1	V20020	2" handle Bolt
5	1	V20021	Handle Washer
6	1	V20151M	VALVE STEM W/ BEARING
7	1	V20152	ANGLE HANDLE
8	1	V20159	2" STEM BUSHING
9	1	V20163	AS568A -116 O-RING, FKM, BROWN
10	1	V20254	2" VALVE BODY
11	1	V20255A	2" Valve Ball
12	1	V20256	2" NPT ENDPLATE, MACHINED
13	1	V20258	2" Ball Seat
14	1	V20258A	2" Valve Seat
15	1	V20261	1 1/2" ANGLE FLANGE END PLATE
16	2	V20264	AS568A -151 O-RING, FKM, BROWN
17	1	V25165	2" NPT X 8" NOZZLE PIPE
18	1	VL1001	PRESSURE LABEL (N/S)

SECTION B-B
SCALE 1:2



THIS DRAWING AND ALL INFORMATION CONTAINED THEREON ARE THE EXCLUSIVE PROPERTY OF BANJO CORPORATION.

UNLESS SPECIFICALLY NOTED, THIS DRAWING AND ITEMS SHOWN ON THIS DRAWING ARE SUBJECT TO CHANGE AT ANY TIME.



BANJO
CORPORATION

BANJO CORPORATION
 150 BANJO DRIVE, CRAWFORDSVILLE, IN 47933
 WEB SITE: WWW.BANJOCORP.COM
 E-MAIL: BANJOSALES@IDEXCORP.COM

DESCRIPTION	2" FPT, 1-1/2" PORT
PART NUMBER	VA200

4

3

2

1

4

3

2

1