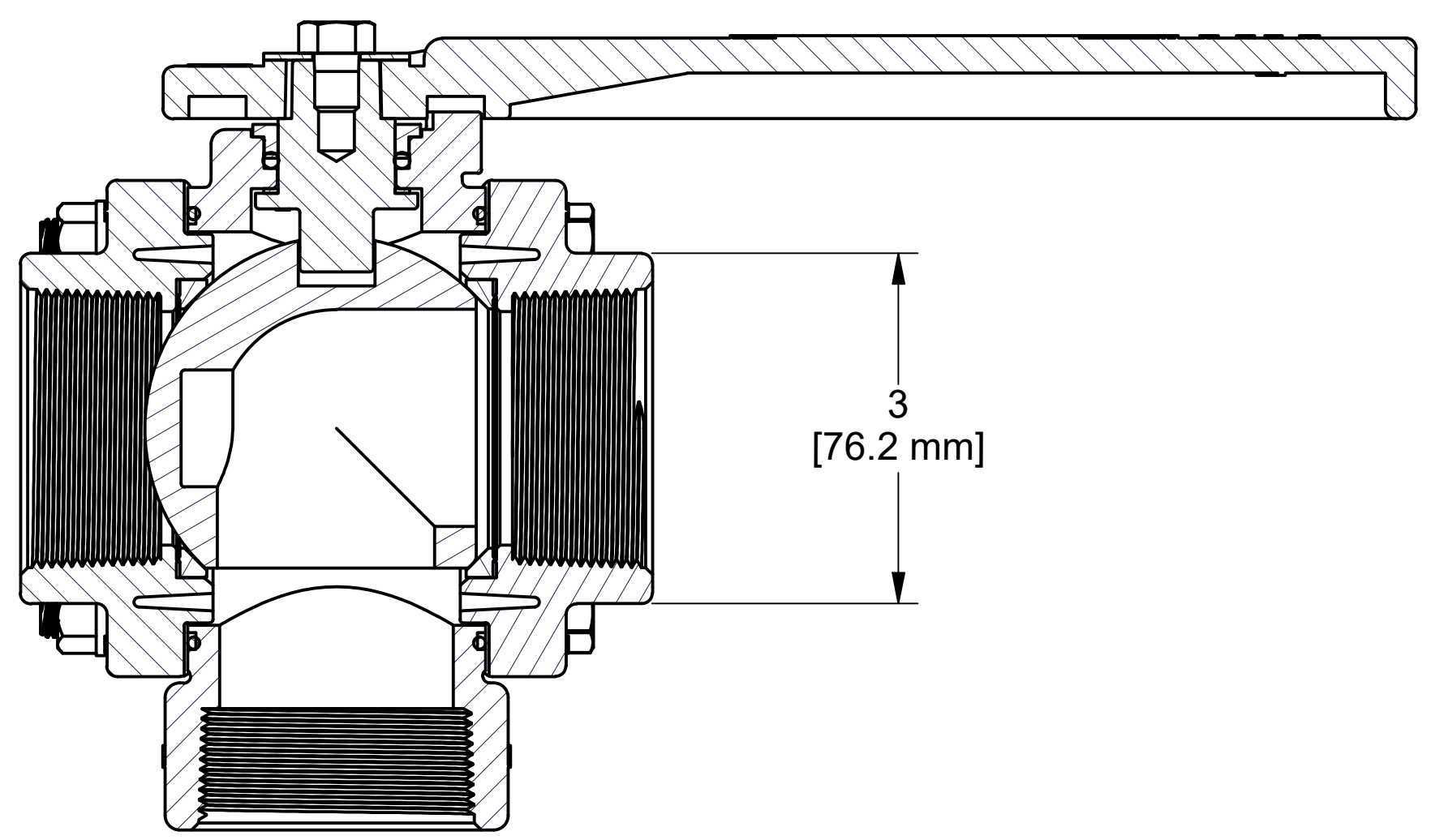
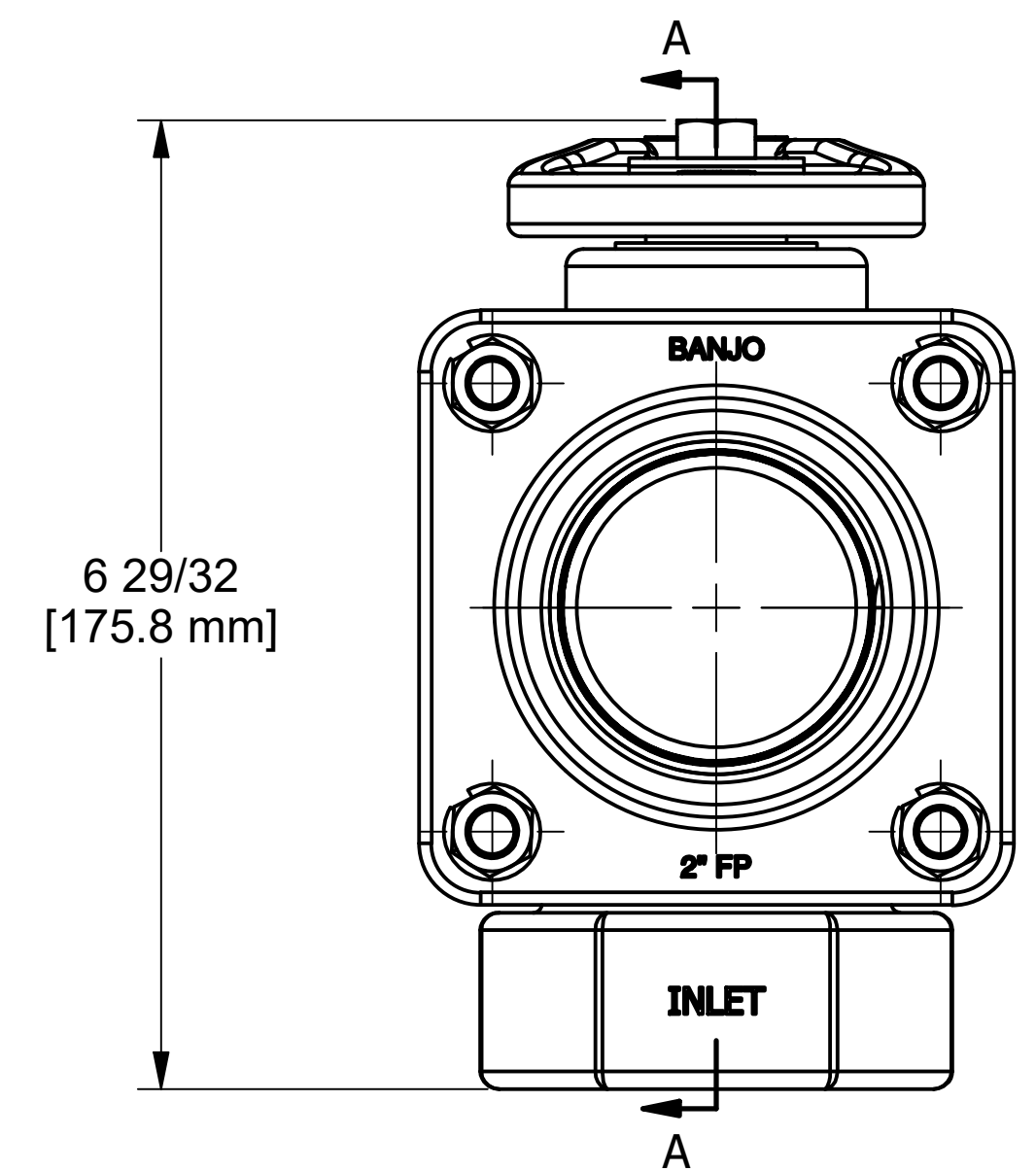
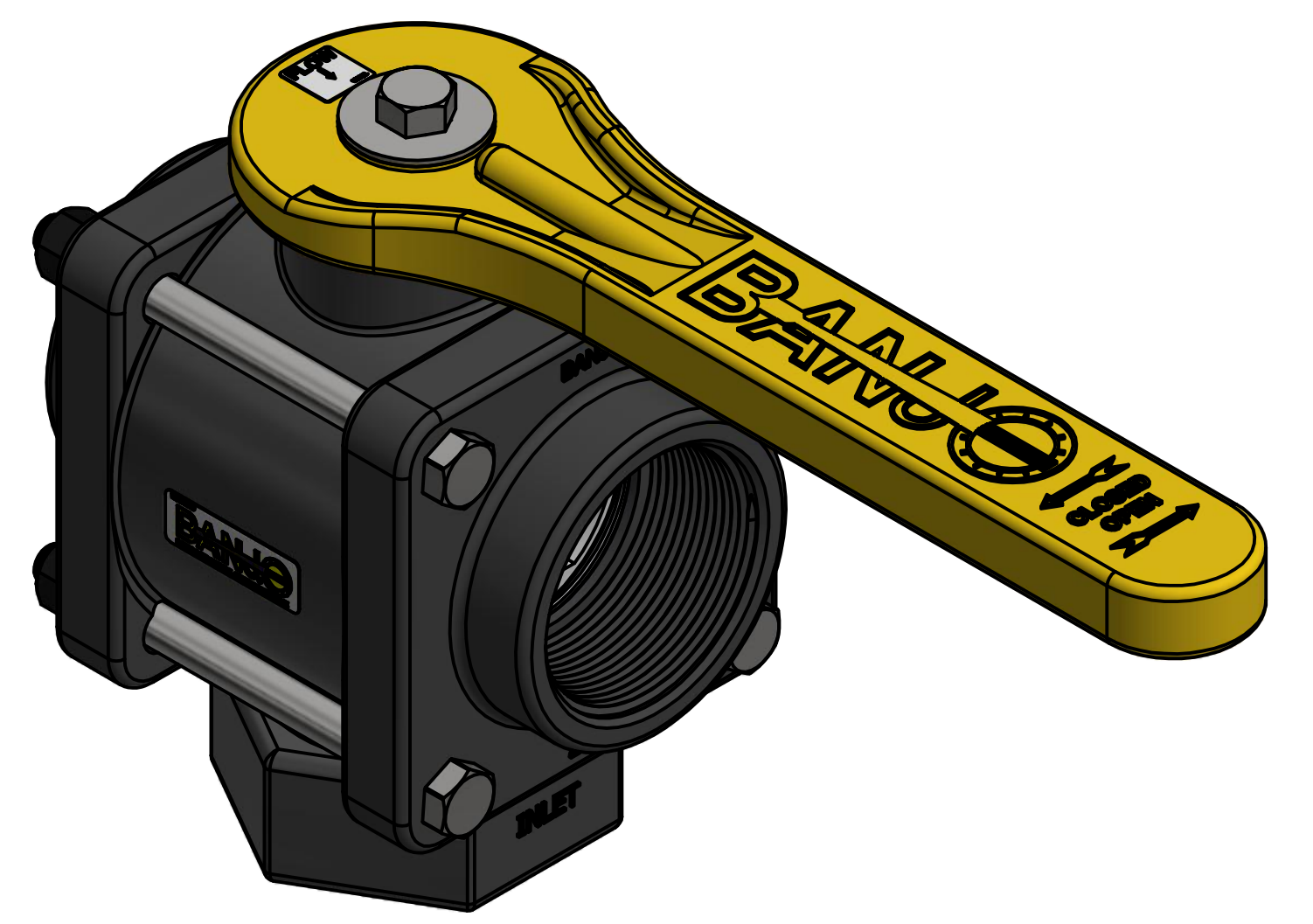
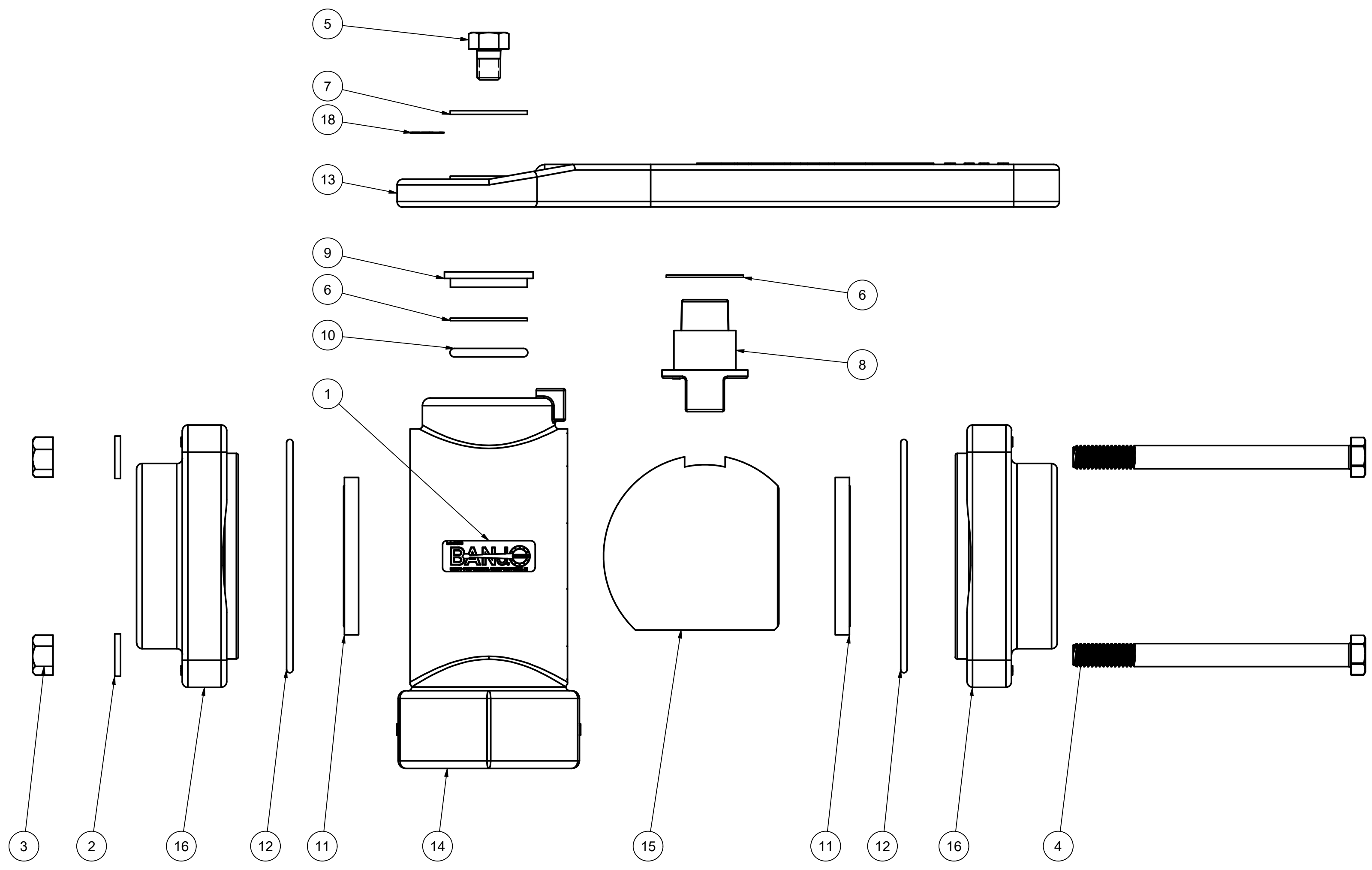


8 7 6 5 4 3 2 1



SECTION A-A
SCALE 3/4

PARTS LIST			
ITEM	QTY	PART NUMBER	DESCRIPTION
1	1	050DECAL	BANJO LOGO DECAL
2	4	V20018	3/8" LOCKWASHER
3	4	V20019	3/8" HEX NUT
4	4	V25017	3/8-16 X 4 1/2" HHCS
5	1	V25020	3/8" HANDLE BOLT
6	2	V25060	VALVE STEM THRUST BEARING
7	1	V25121	3/8" FENDER WASHER
8	1	V25151B	STEM 2"FP & 3"FP, MACHINED
9	1	V25160	STEM BUSHING
10	1	V25163	AS568A -214 O-RING, FKM, BROWN
11	2	V25258	3" FP BALL SEAT
12	2	V25264	O-RING, ID: 3.575", CS: 0.103, FKM
13	1	V25353B	2" FP BL HANDLE
14	1	V25354B	2" BL VALVE BODY
15	1	V25355B	2" FP BL 3-WAY BALL, TUMBLED
16	2	V25356	2" FP 3-WAY ENDPLATE
17	1	VL1016	200 PSI PRESSURE LABEL FKM SEALS (N/S)
18	1	VL200BL	BOTTOM LOAD FLOW LABEL



THIS DRAWING AND ALL INFORMATION CONTAINED THEREON ARE THE EXCLUSIVE PROPERTY OF BANJO CORPORATION.
UNLESS SPECIFICALLY NOTED, THIS DRAWING AND ITEMS SHOWN ON THIS DRAWING ARE SUBJECT TO CHANGE AT ANY TIME.

BANJO CORPORATION
150 BANJO DRIVE, CRAWFORDSVILLE, IN 47933
WEB SITE: WWW.BANJO.CORP.COM
E-MAIL: BANJOSALES@IDEXCORP.COM

DESCRIPTION
2" BOTTOM LOAD VALVE

PART NUMBER
V200BL

8 7 6 5 4 3 2 1