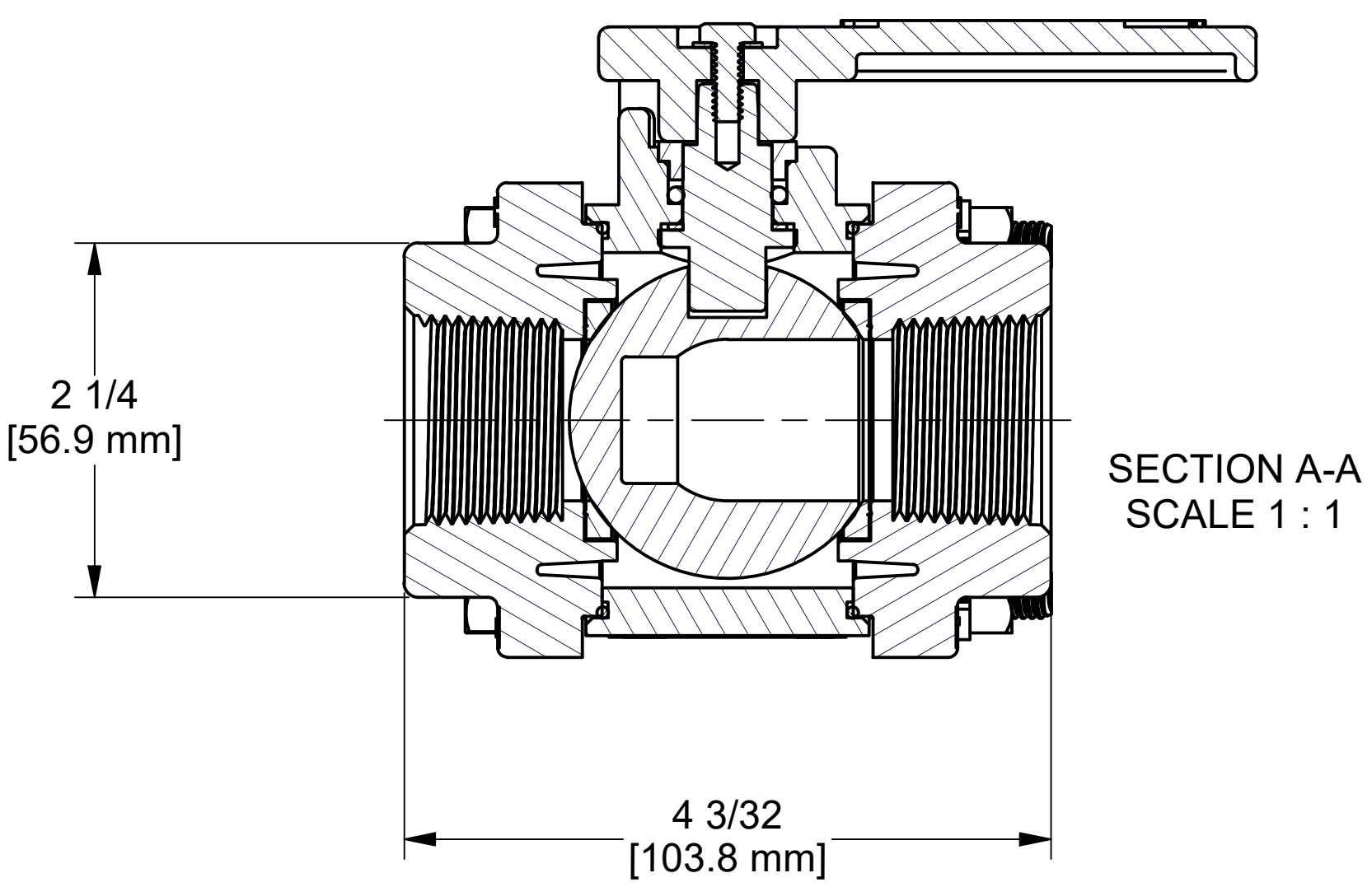
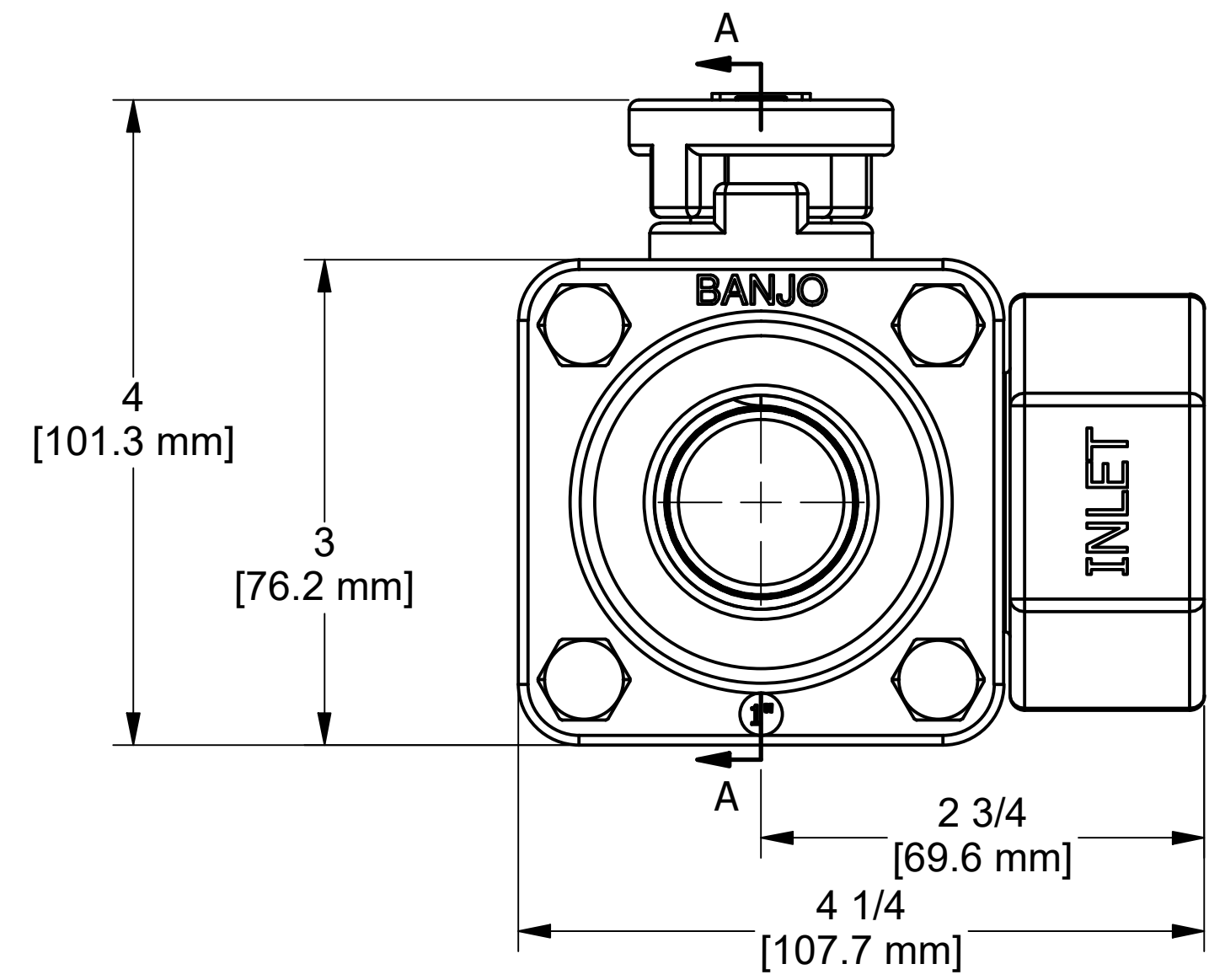
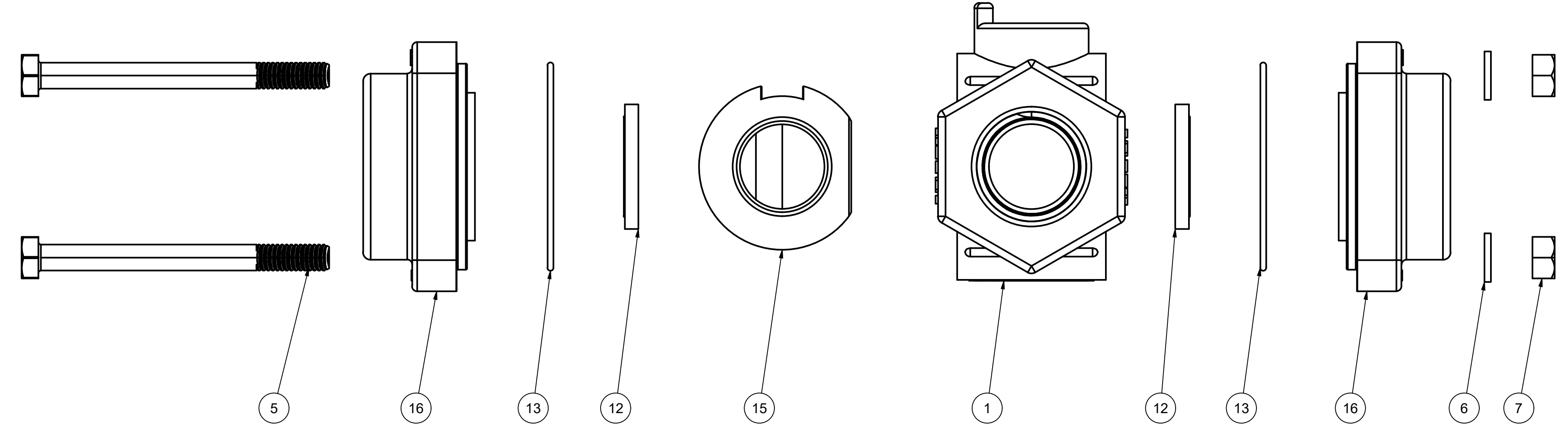
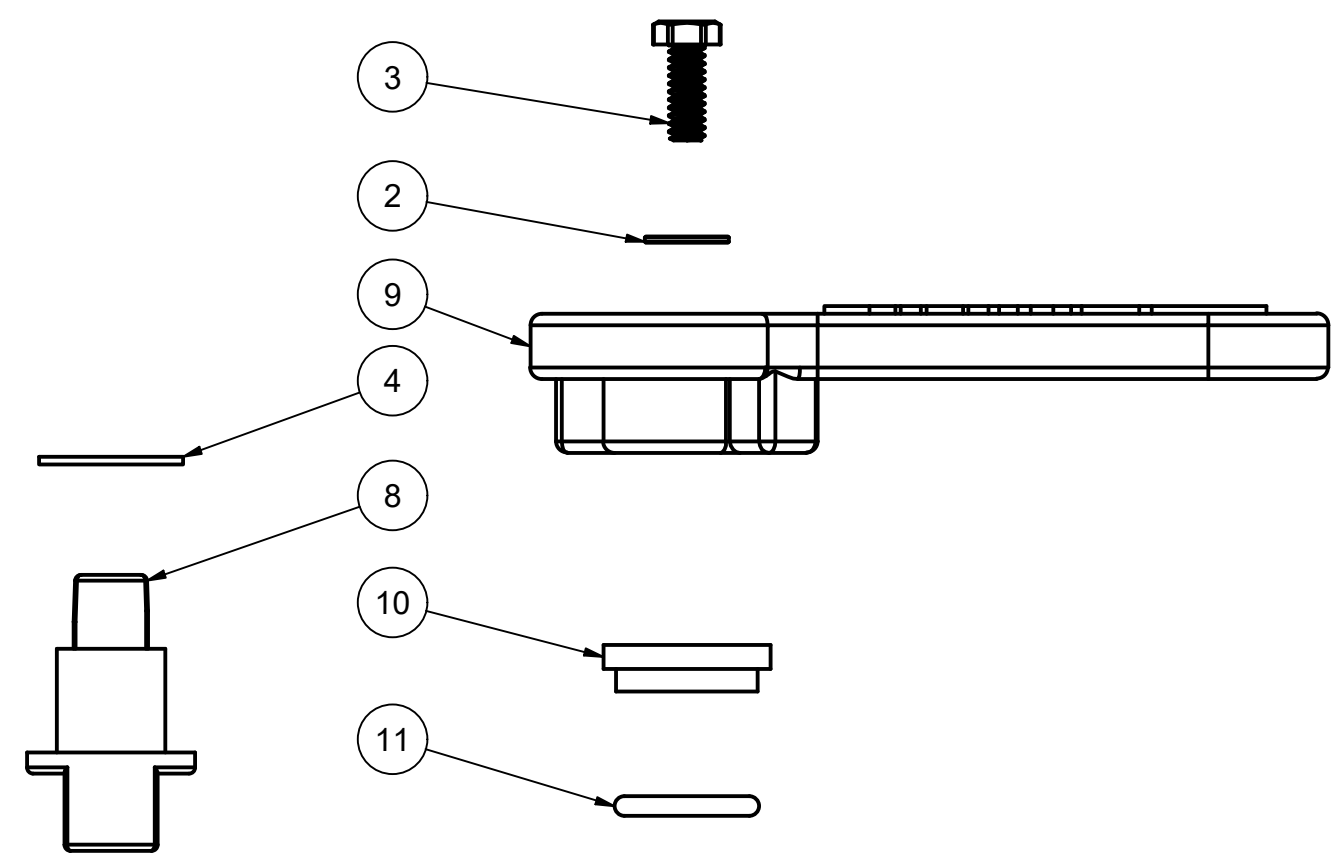
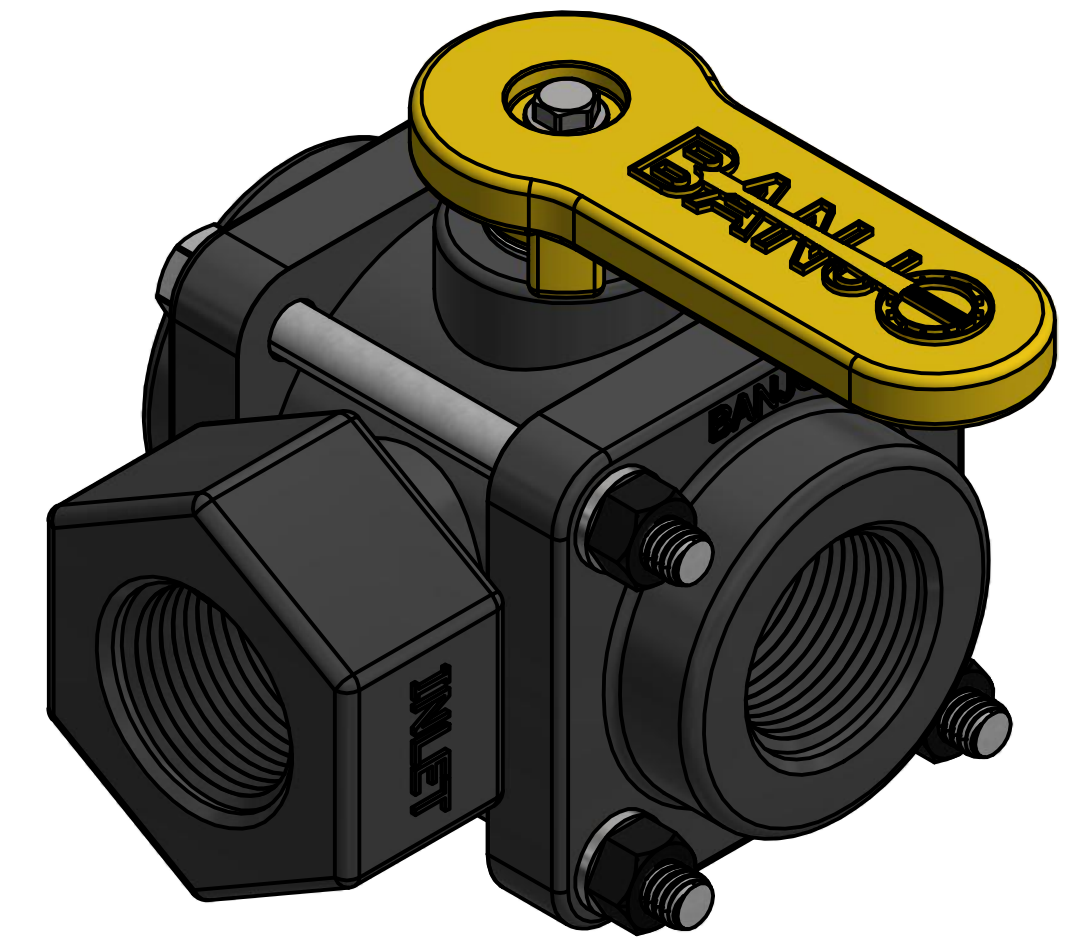


8 7 6 5 4 3 2 1



PARTS LIST			
ITEM	QTY	PART NUMBER	DESCRIPTION
1	1	050DECAL	BANJO LOGO DECAL
2	1	SW10	#10 WASHER
3	1	V07020	#10-24x0.50 HHCS 18-8SS
4	1	V10060	THRUST BEARING
5	4	V10117	5/16 - 18 X 3 1/2" HHCS
6	4	V10118	5/16" LOCKWASHER
7	4	V10119	5/16" HEX NUT
8	1	V10151	1" VALVE STEM
9	1	V10153A	HANDLE
10	1	V10159	STEM BUSHING
11	1	V10163	AS568A -113 O-RING, FKM, BROWN
12	2	V10258	3" FP BALL SEAT
13	2	V10264	AS568A -036 O-RING, FKM, BROWN
14	1	V10354S	1" 3-WAY SL VALVE BODY, MACHINED
15	1	V10355S	1" SIDE LOAD BALL, TUMBLED
16	2	V10357	1" NPT ENDPLATE, MACHINED
17	1	VL1016	200 PSI DECAL (N/S)



THIS DRAWING AND ALL INFORMATION CONTAINED THEREON ARE THE EXCLUSIVE PROPERTY OF BANJO CORPORATION.

UNLESS SPECIFICALLY NOTED, THIS DRAWING AND ITEMS SHOWN ON THIS DRAWING ARE SUBJECT TO CHANGE AT ANY TIME.

BANJO CORPORATION
 150 BANJO DRIVE, CRAWFORDSVILLE, IN 47933
 WEB SITE: WWW.BANJO.CORP.COM
 E-MAIL: BANJOSALES@IDEXCORP.COM

DESCRIPTION
1" SIDE LOAD 3-WAY VALVE ASSEMBLY

PART NUMBER
V100SL

8 7 6 5 4 3 2 1