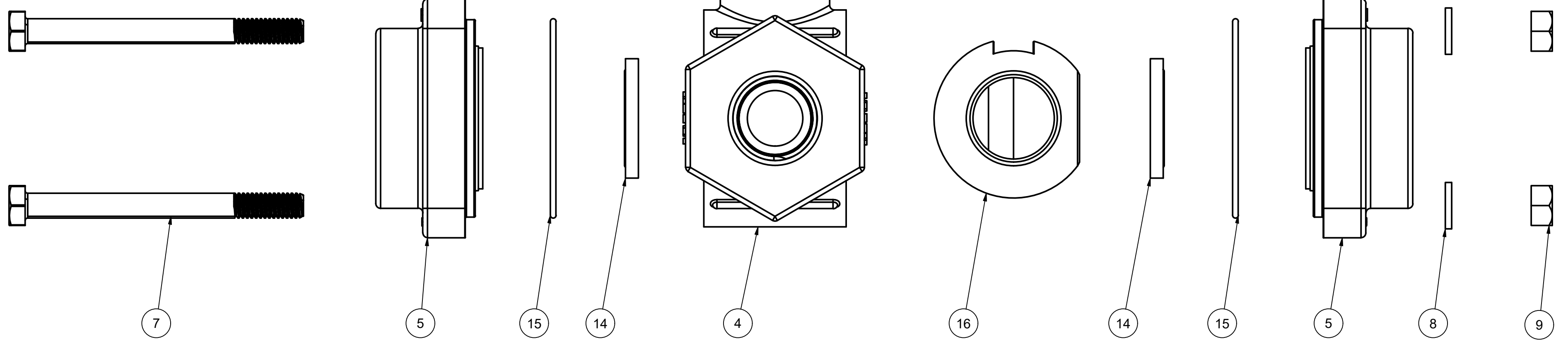
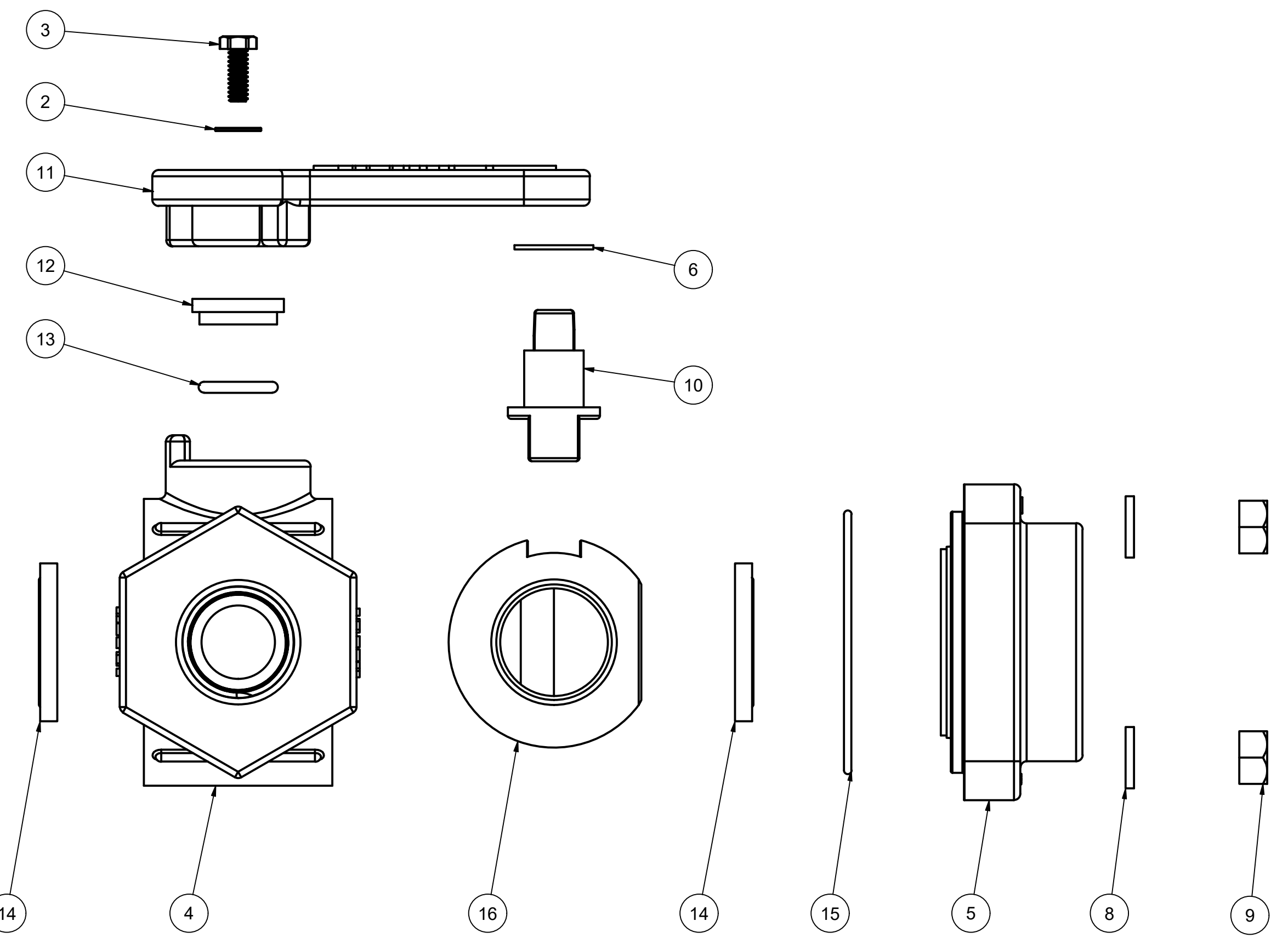
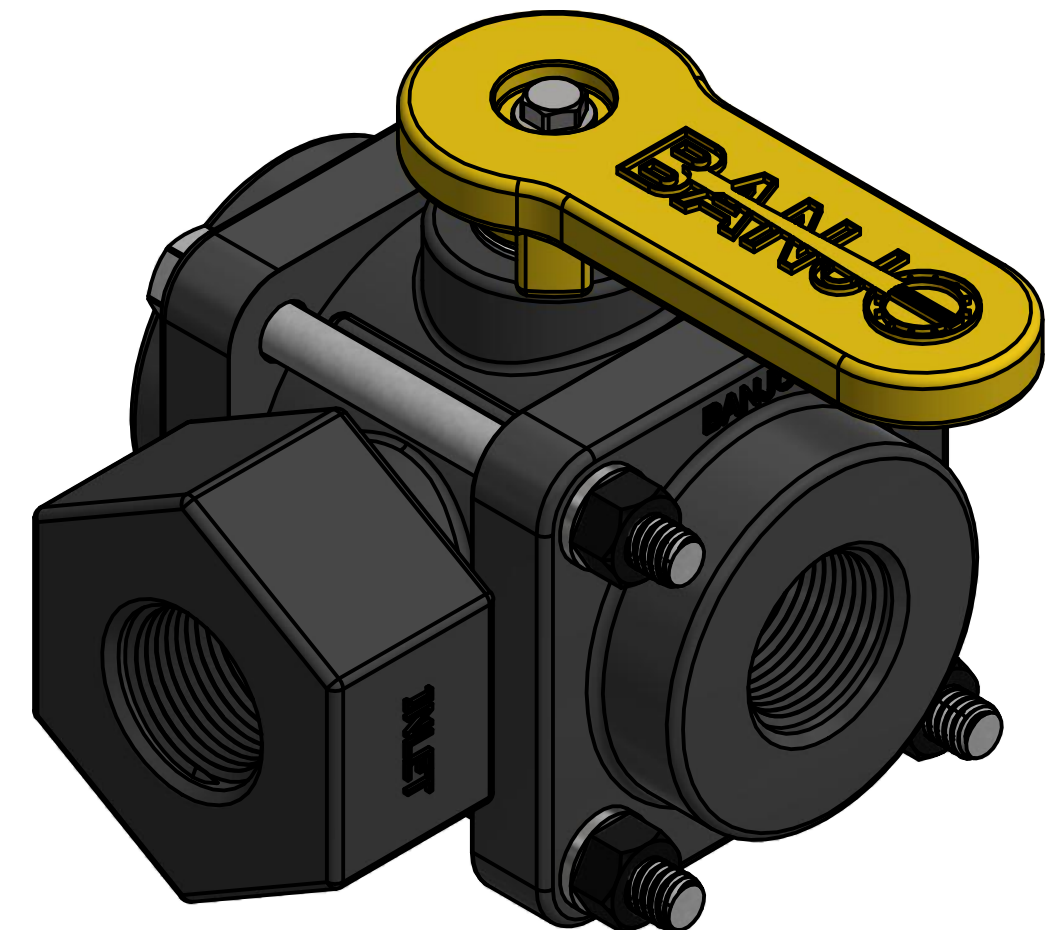


PARTS LIST			
ITEM	QTY	PART NUMBER	DESCRIPTION
1	1	050DECAL	BANJO LOGO DECAL
2	1	SW10	#10 WASHER
3	1	V07020	#10-24x0.50 HHCS 18-8SS
4	1	V07354S	SIDE LOAD VALVE BODY
5	2	V07357	3/4" NPT 3-WAY ENDPLATE, MACHINED
6	1	V10060	THRUST BEARING
7	4	V10117	5/16 - 18 X 3 1/2" HHCS
8	4	V10118	5/16" LOCKWASHER
9	4	V10119	5/16" HEX NUT
10	1	V10151	1" VALVE STEM
11	1	V10153A	HANDLE
12	1	V10159	STEM BUSHING
13	1	V10163	AS568A -113 O-RING, FKM, BROWN
14	2	V10258	3" FP BALL SEAT
15	2	V10264	AS568A -036 O-RING, FKM, BROWN
16	1	V10355S	1" SIDE LOAD BALL, TUMBLED
17	1	VL1016	200 PSI PRESSURE LABEL (N/S)



THIS DRAWING AND ALL INFORMATION CONTAINED THEREON ARE THE EXCLUSIVE PROPERTY OF BANJO CORPORATION.

UNLESS SPECIFICALLY NOTED, THIS DRAWING AND ITEMS SHOWN ON THIS DRAWING ARE SUBJECT TO CHANGE AT ANY TIME.

BANJO CORPORATION
 150 BANJO DRIVE, CRAWFORDSVILLE, IN 47933
 WEB SITE: WWW.BANJO.CORP.COM
 E-MAIL: BANJOSALES@IDEXCORP.COM

DESCRIPTION
 3-WAY 3/4" FPT, 1" PORT-SIDE LD

PART NUMBER
 V075SL