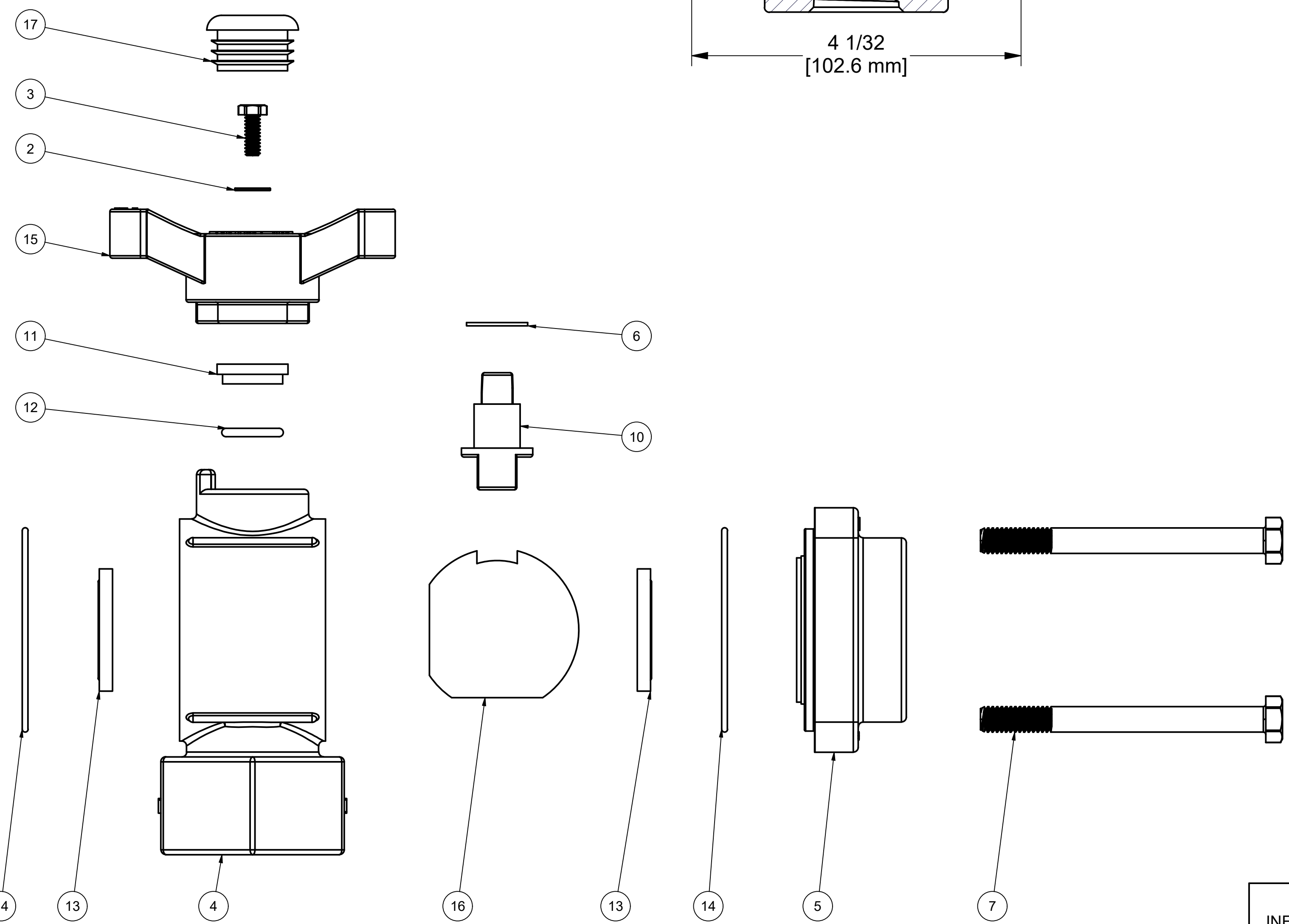


PARTS LIST			
ITEM	QTY	PART NUMBER	DESCRIPTION
1	1	050DECAL	DECAL (N/S)
2	1	SW10	#10 WASHER
3	1	V07020	#10-24x0.50 HHCS 18-8SS
4	1	V07354B	3/4" BL VALVE BODY, MACHINED
5	2	V07357	3/4" NPT 3-WAY ENDPLATE, MACHINED
6	1	V10060	THRUST BEARING
7	4	V10117	5/16 - 18 X 3 1/2" HHCS
8	4	V10118	5/16" LOCKWASHER
9	4	V10119	5/16" HEX NUT
10	1	V10151	1" VALVE STEM
11	1	V10159	STEM BUSHING
12	1	V10163	AS568A -113 O-RING, FKM, BROWN
13	2	V10258	3" FP BALL SEAT
14	2	V10264	AS568A -036 O-RING, FKM, BROWN
15	1	V10353TB	BOTTOM LOAD T-HANDLE
16	1	V10355B	1" FP BL BALL, TUMBLED
17	1	V20353C	1 1/8" CAPPLUG
18	1	VL1016	200 PSI DECAL (N/S)



THIS DRAWING AND ALL INFORMATION CONTAINED THEREON ARE THE EXCLUSIVE PROPERTY OF BANJO CORPORATION.

UNLESS SPECIFICALLY NOTED, THIS DRAWING AND ITEMS SHOWN ON THIS DRAWING ARE SUBJECT TO CHANGE AT ANY TIME.

BANJO CORPORATION
 150 BANJO DRIVE, CRAWFORDSVILLE, IN 47933
 WEB SITE: WWW.BANJO.CORP.COM
 E-MAIL: BANJOSALES@IDEXCORP.COM

DESCRIPTION
3/4" BOTTOM LOAD VALVE

PART NUMBER
V075BL