
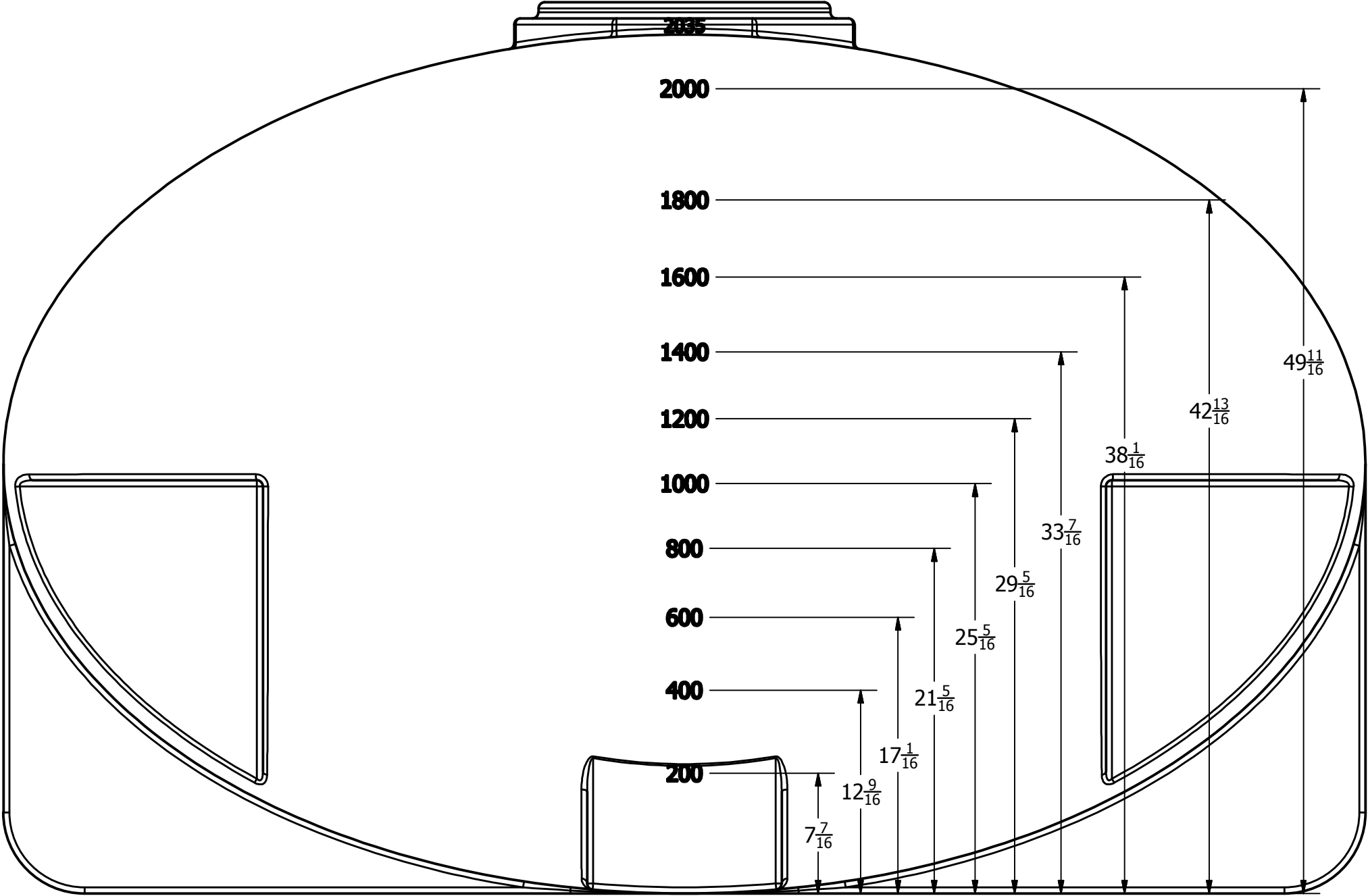



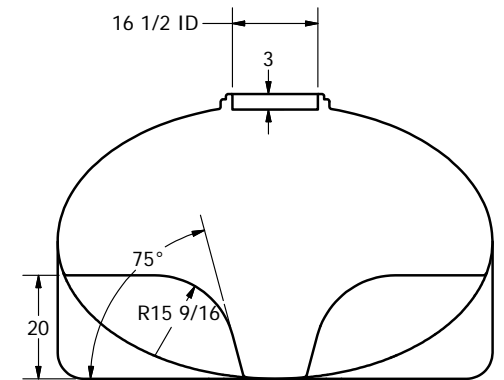
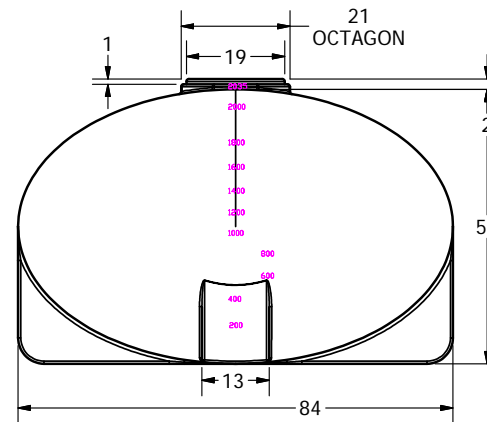
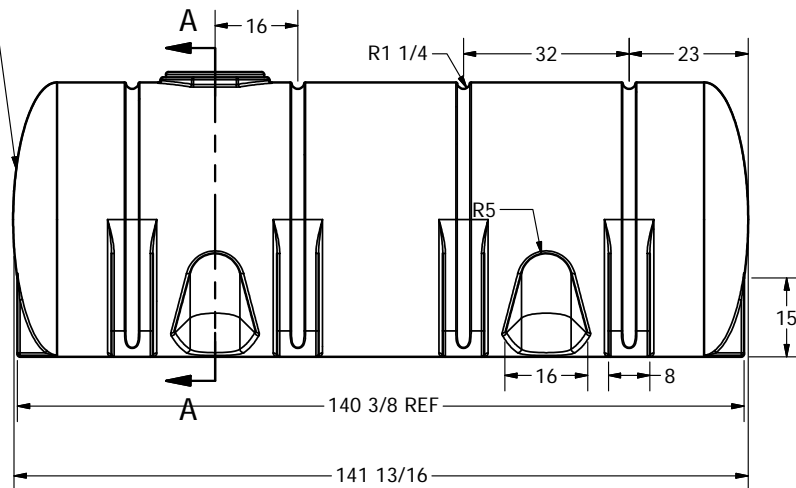
FOB: GRIFFIN, GA LANCASTER, OH TOOLE, UT & HANFORD, CA

REVISION HISTORY				
REV	DESCRIPTION	DATE	AUTHOR	
A	REDRAWN	8/6/2013	Michael Holden	
DRAWN	Jerry Paulson	4/20/1994	 NORWESCO, INC. SAINT BONIFACIUS, MN TITLE 2035 GALLON ELLIPTICAL LEG TANK	
CHECKED				
QA				
MFG				
APPROVED				
			SIZE	DWG NO
			B	
			SCALE: 1/16	SHEET 1 OF 2

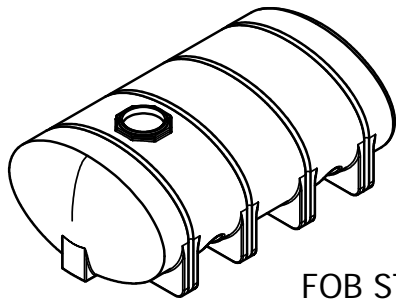


DRAWN Jerry Paulson	4/20/1994	 NORWESCO NORWESCO, INC. SAINT BONIFACIUS, MN		
CHECKED		TITLE		
QA		2035 GALLON ELLIPTICAL LEG TANK		
MFG				
APPROVED		SIZE	DWG NO	REV
		B		A
		SCALE: 1/16	SHEET 2 OF 2	


GALLON MARKS ARE ON THIS END



SECTION A-A
SCALE 1 / 24



FOB ST. BONIFACIUS, MN, SHAWNEE, OK, &
FAIRFIELD, TX

DRAWN Jerry Paulson	10/11/2007	 NORWESCO NORWESCO, INC., ST. BONIFACIUS, MN	
CHECKED			
QA		2035 GALLON ELLIPTICAL TANK	
MFG			
APPROVED Jerry Paulson			
		SIZE B	REV A
		SCALE: 1/24	SHEET 1 OF 1